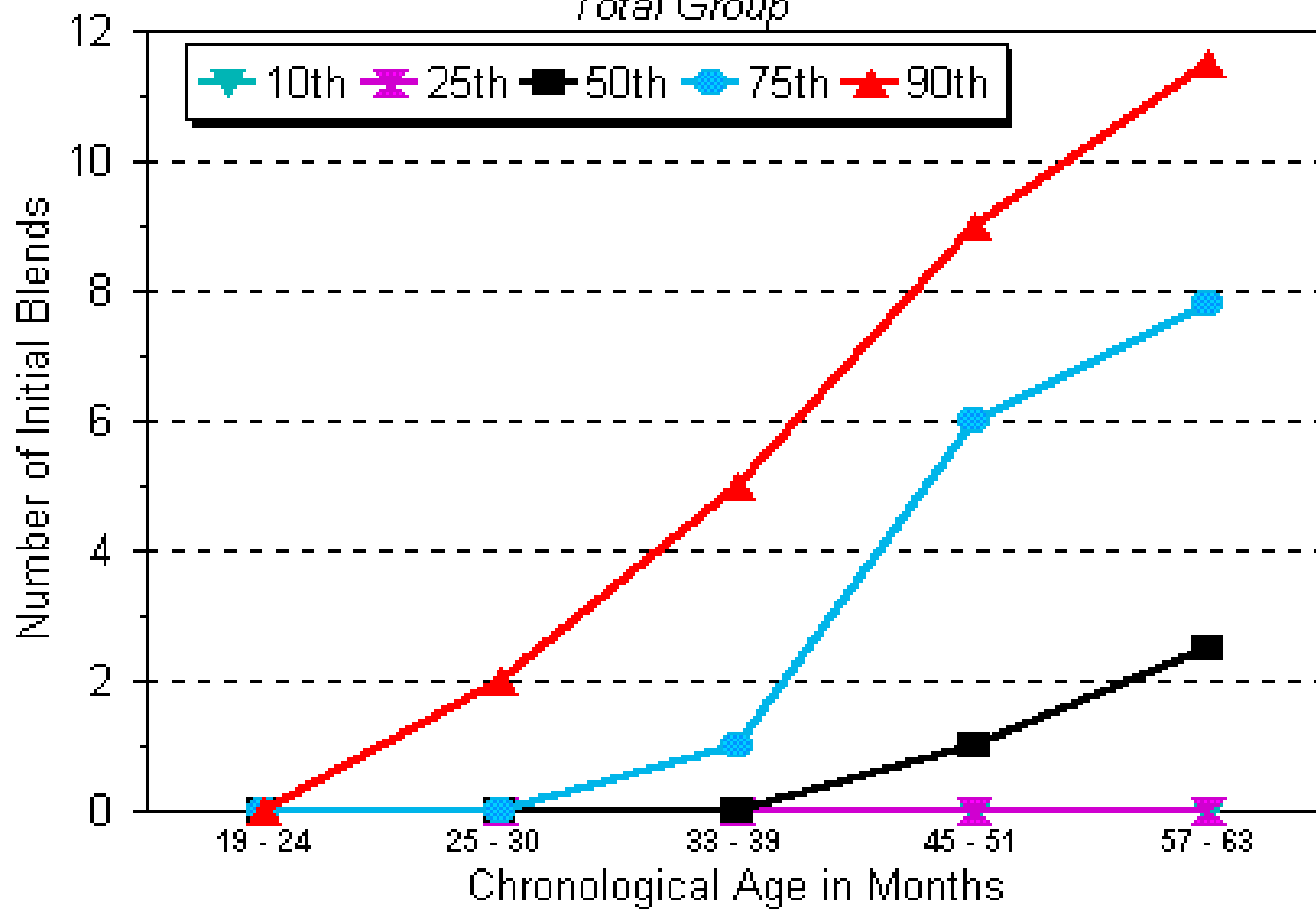


Number of initial blends

Total Group: Number of initial  
blends

# Number of Types of Initial Blends

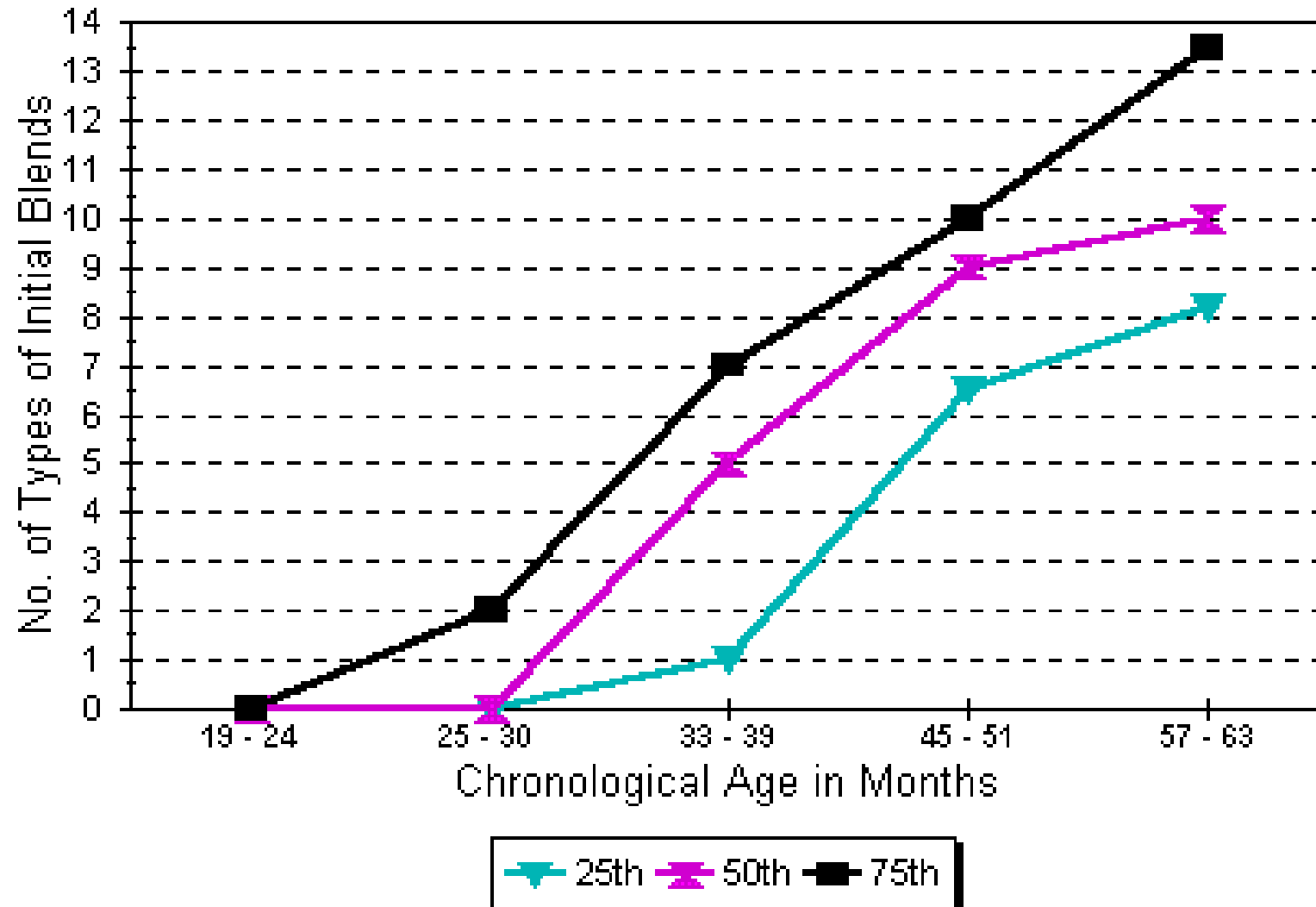
*Total Group*



Number of initial blends by  
expressive language quotient and  
age

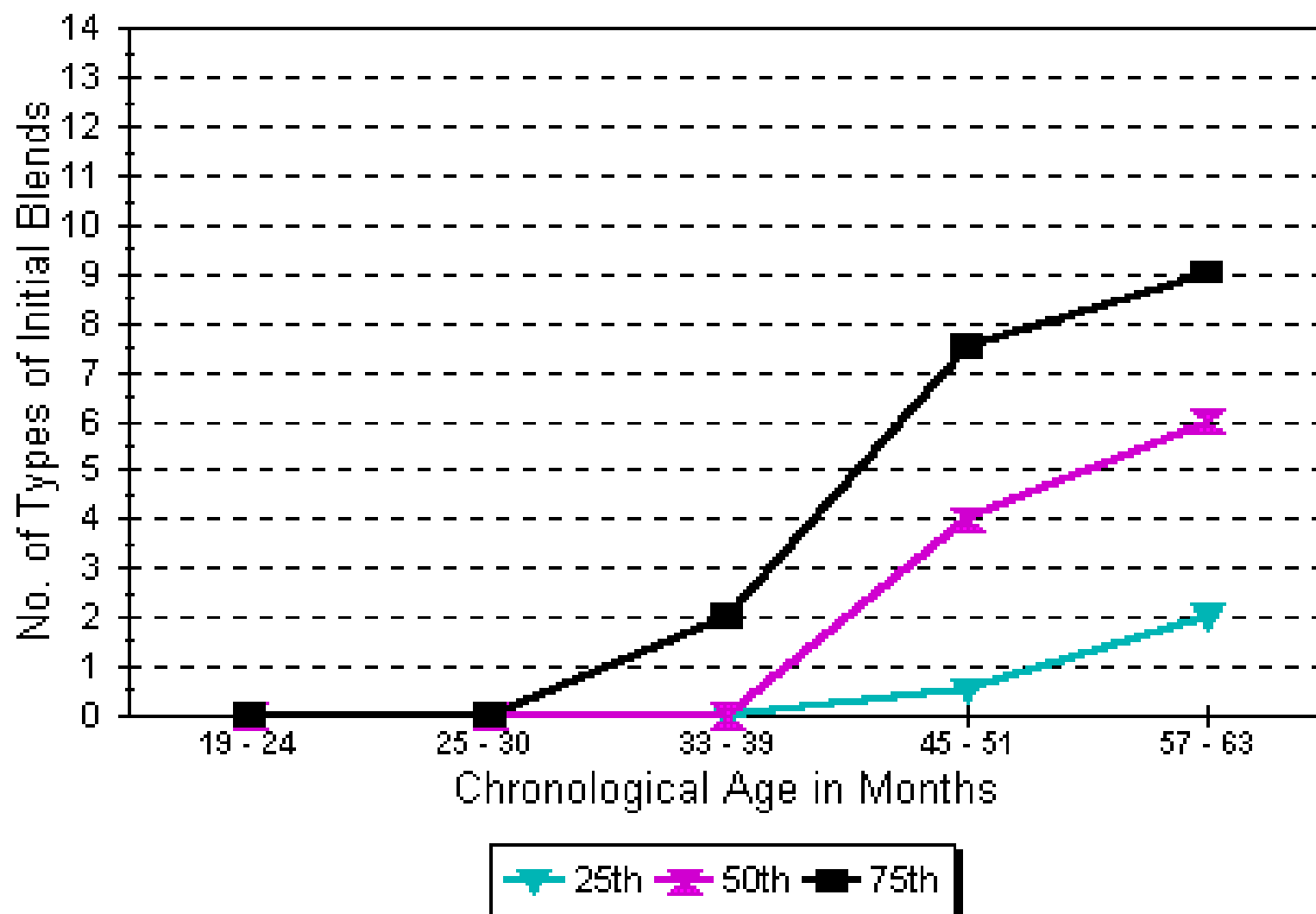
## No. of Types of Initial Blends

*Expressive Lang. Quotient at Least 80*



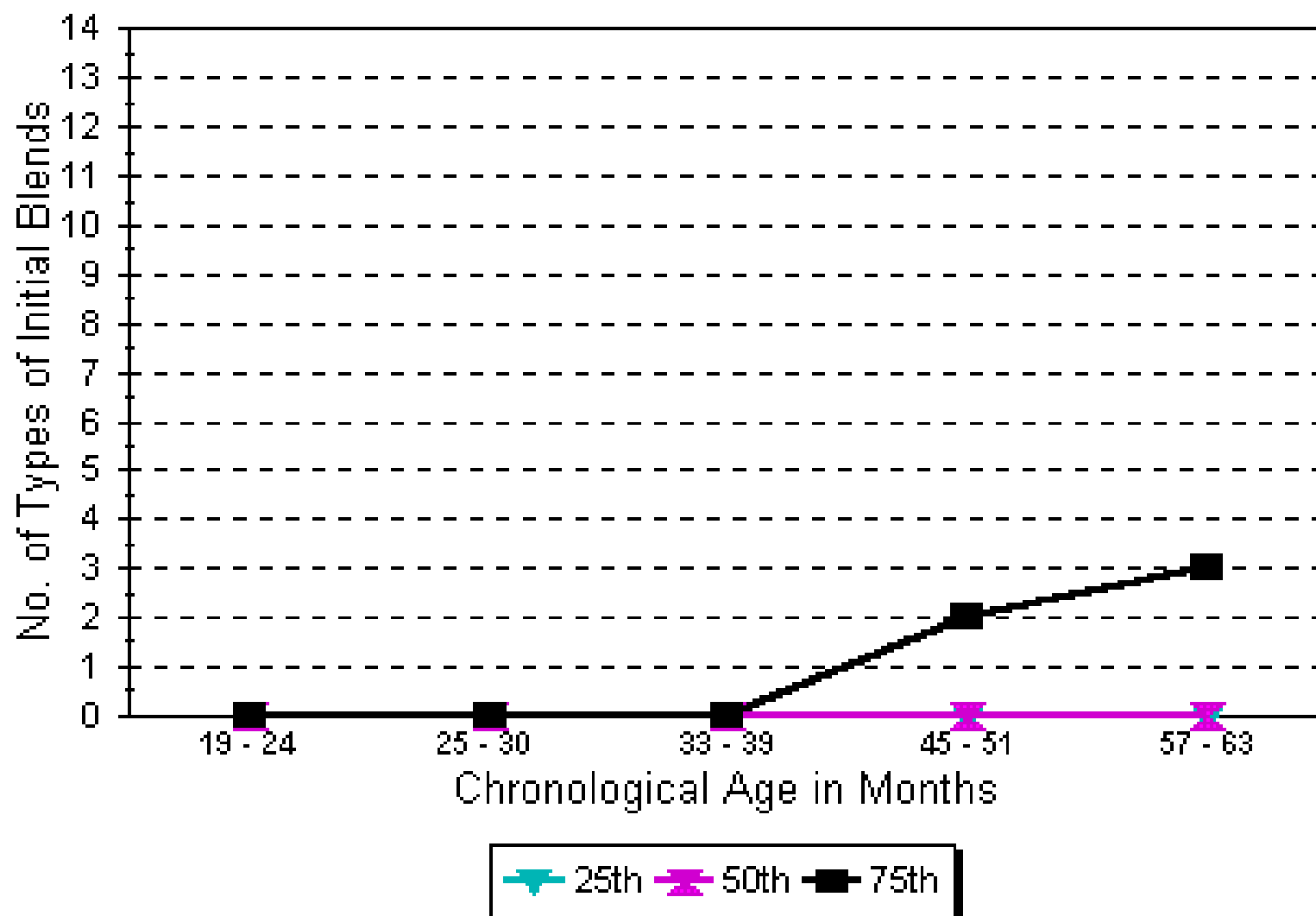
## No. of Types of Initial Blends

*Expressive Language Quotient 60 - 79*



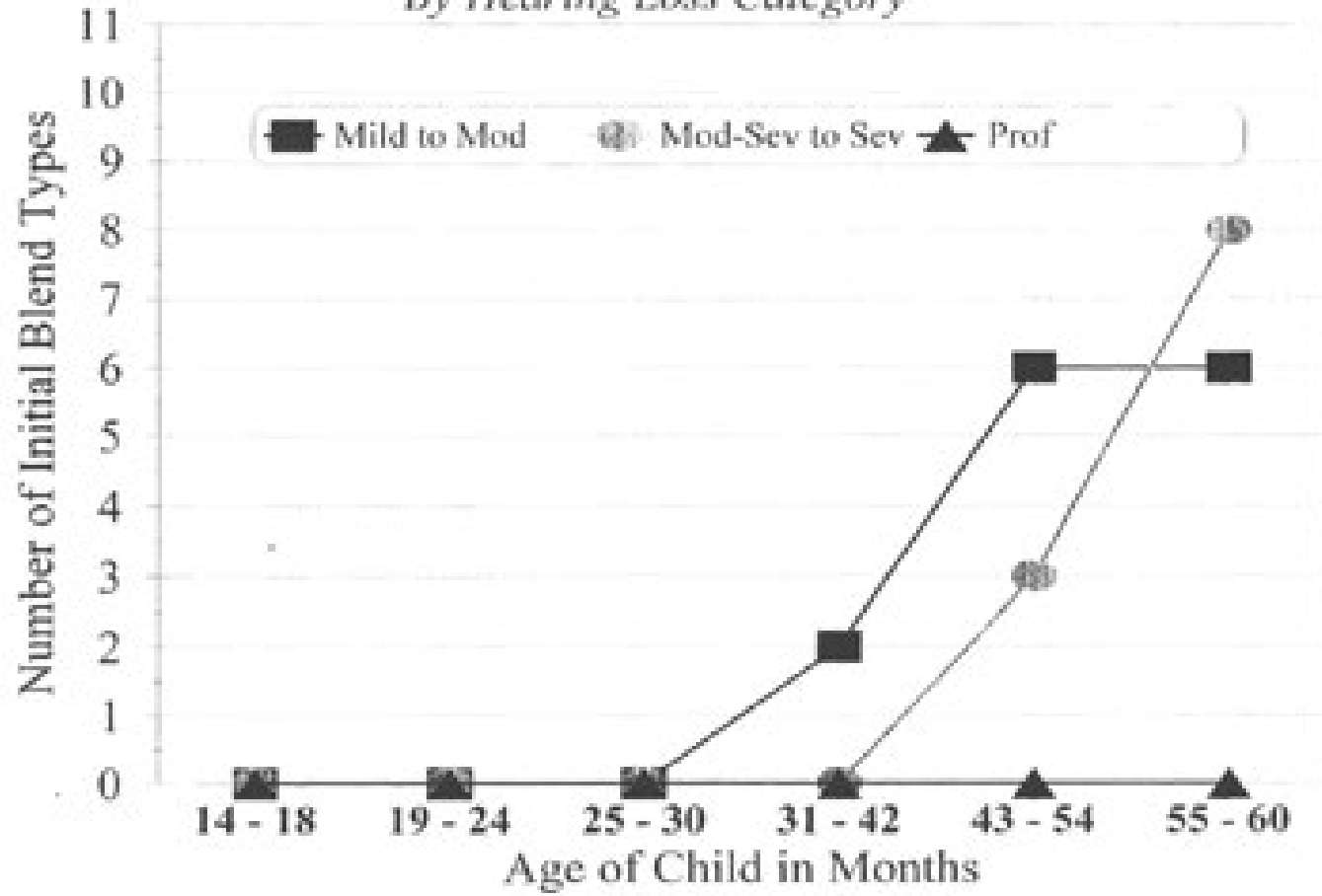
## No. of Types of Initial Blends

*Expressive Language Quotient < 60*



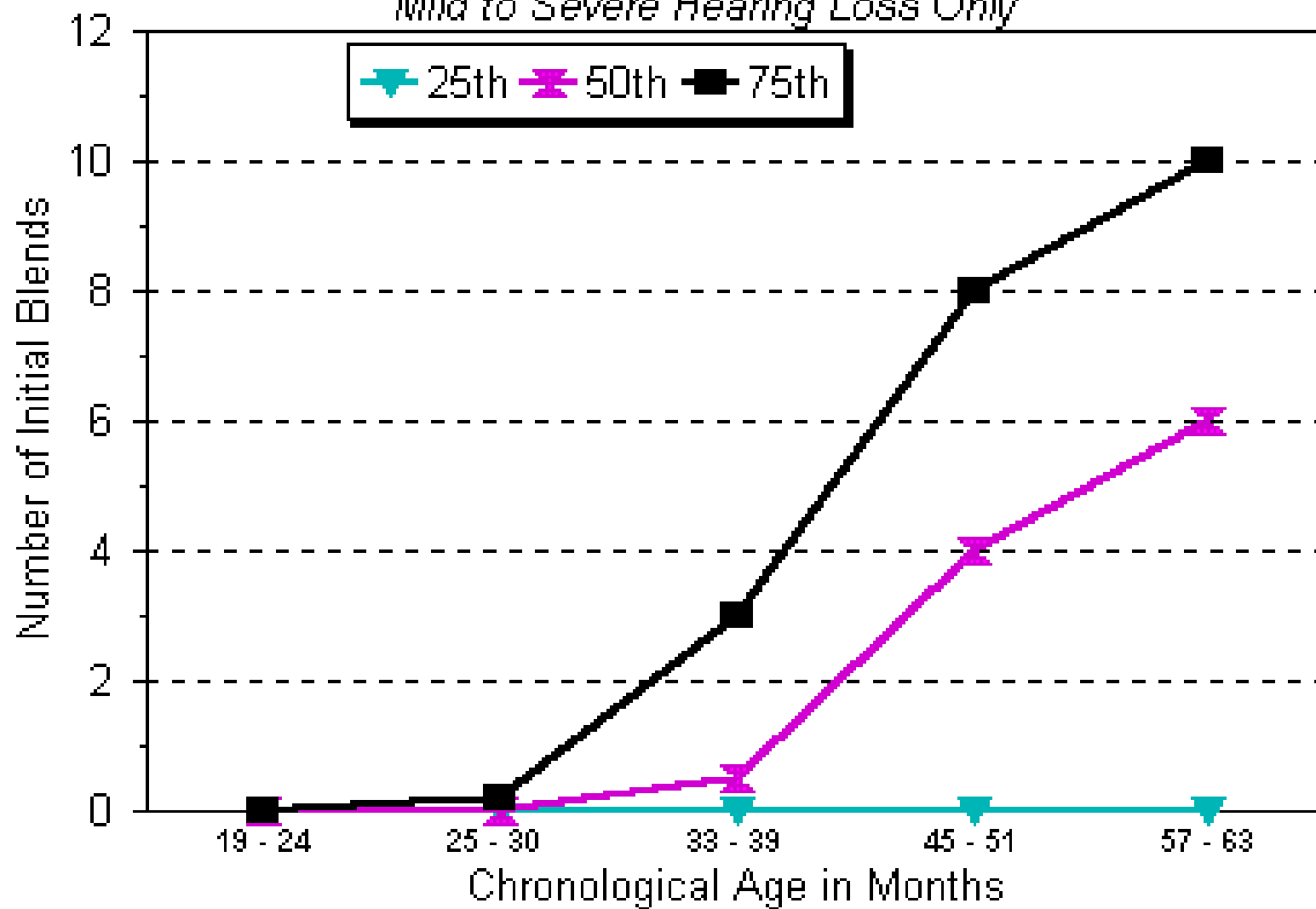
Number of initial blends by  
degree of hearing loss and age

No. of Types of Initial Blends  
*By Hearing Loss Category*



# Number of Types of Initial Blends

*Mild to Severe Hearing Loss Only*



# Number of Types of Initial Blends

*Profound Hearing Loss Only*

