

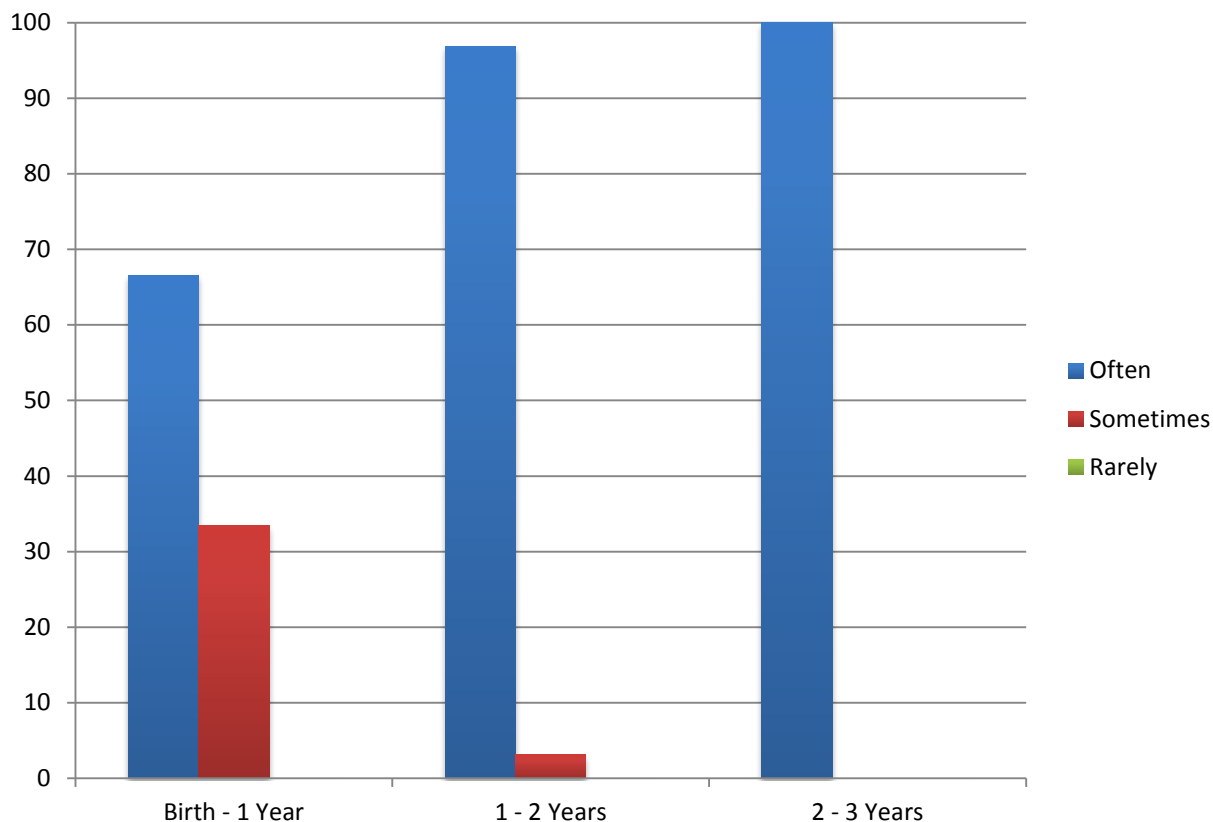
60% NH mastered 0-12 mo.

- Item 5: Does your child show awareness of voices (quiets to the sound and/or turns to the sound source), spoken at typical loudness levels (in regular voice)?
- Item 6: Does your child detect the Ling Six Sounds (M, AH, OO, E, SH, S)?
- Item 7: Does your child detect the speaker's voice when background noise (softer than the speaker's voice) is present?
- Item 9: Does your child localize to the correct sound source (to the direction the sound is coming from)?

- Item 10: Does your child notice a difference or respond differently between someone talking vs. a common environmental sound (difference between mom talking and someone clapping their hands)?
- Item 13: Does your child notice the difference (discriminate) between a person singing (for example “Happy Birthday”) from a person having a conversation?
- Item 14: Does your child notice the difference between family members’ voices (for example: Dad’s voice vs. Mom’s voice vs. a sibling’s voice)? (

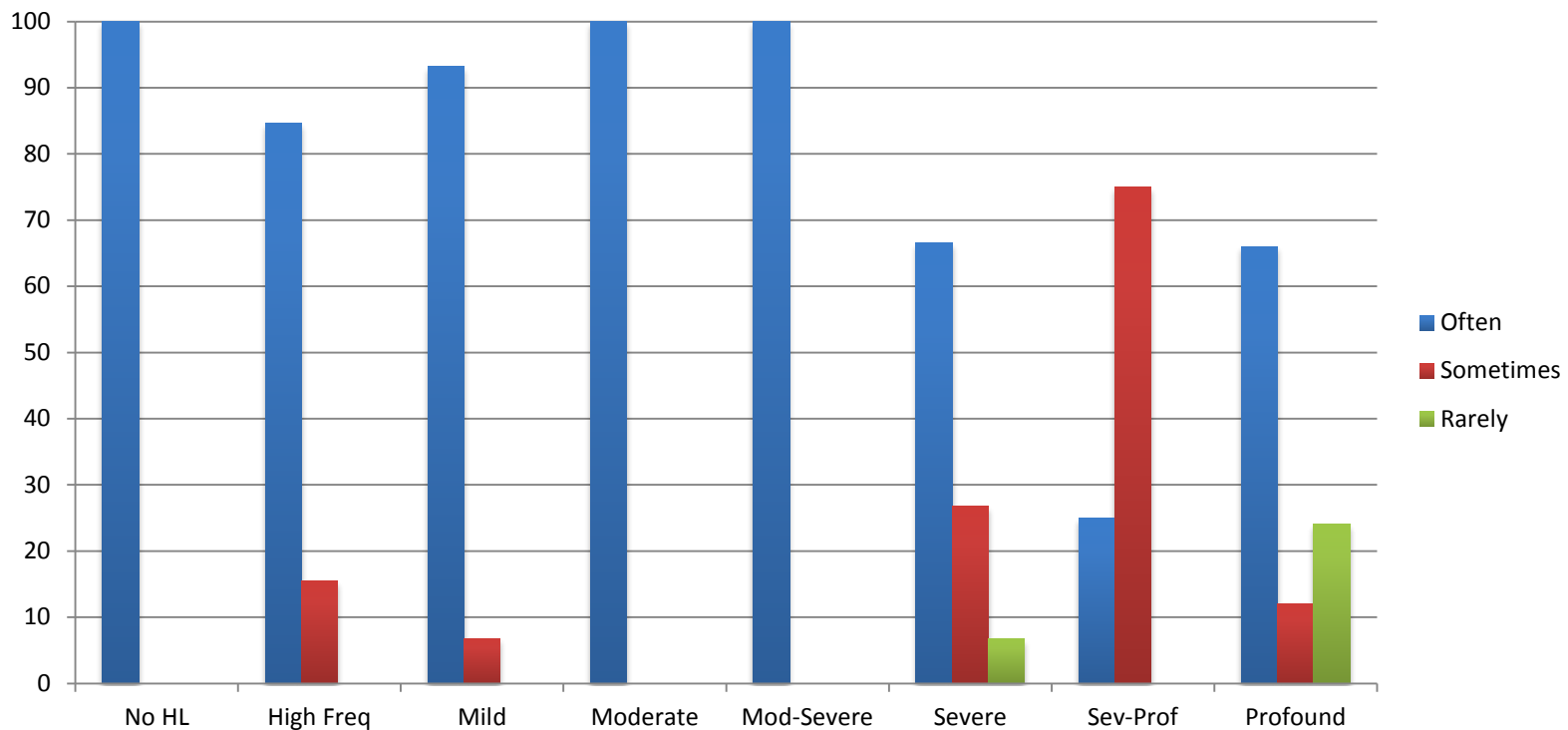
Tyberg, L., Beams, D., Sedey, A. & Yoshinaga-Itano, C. (2013)

Item 5: Does your child show awareness of voices (quiets to the sound and/or turns to the sound source), spoken at typical loudness levels (in regular voice)? (NH)

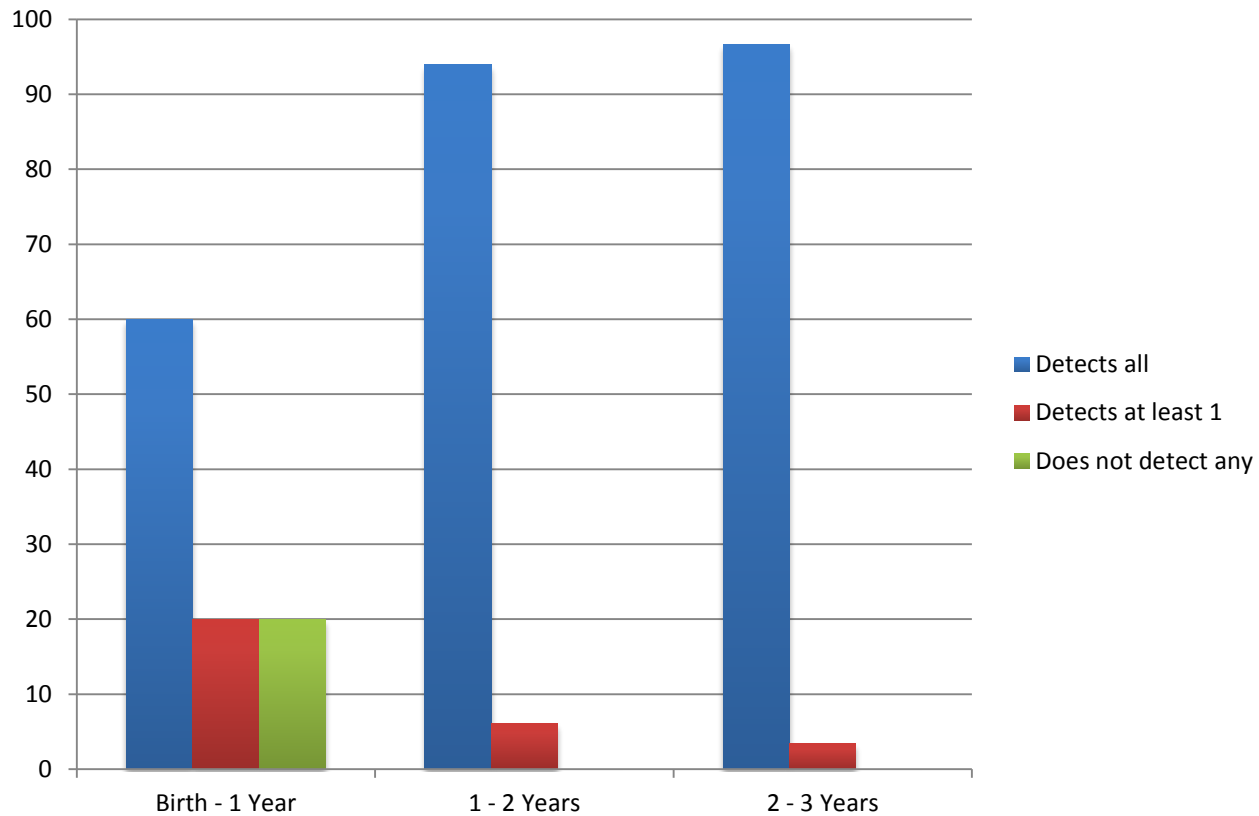


# Question 5 (Meagher et al., 2013, DHH)

- Does your child show awareness of voices spoken at typical loudness levels?

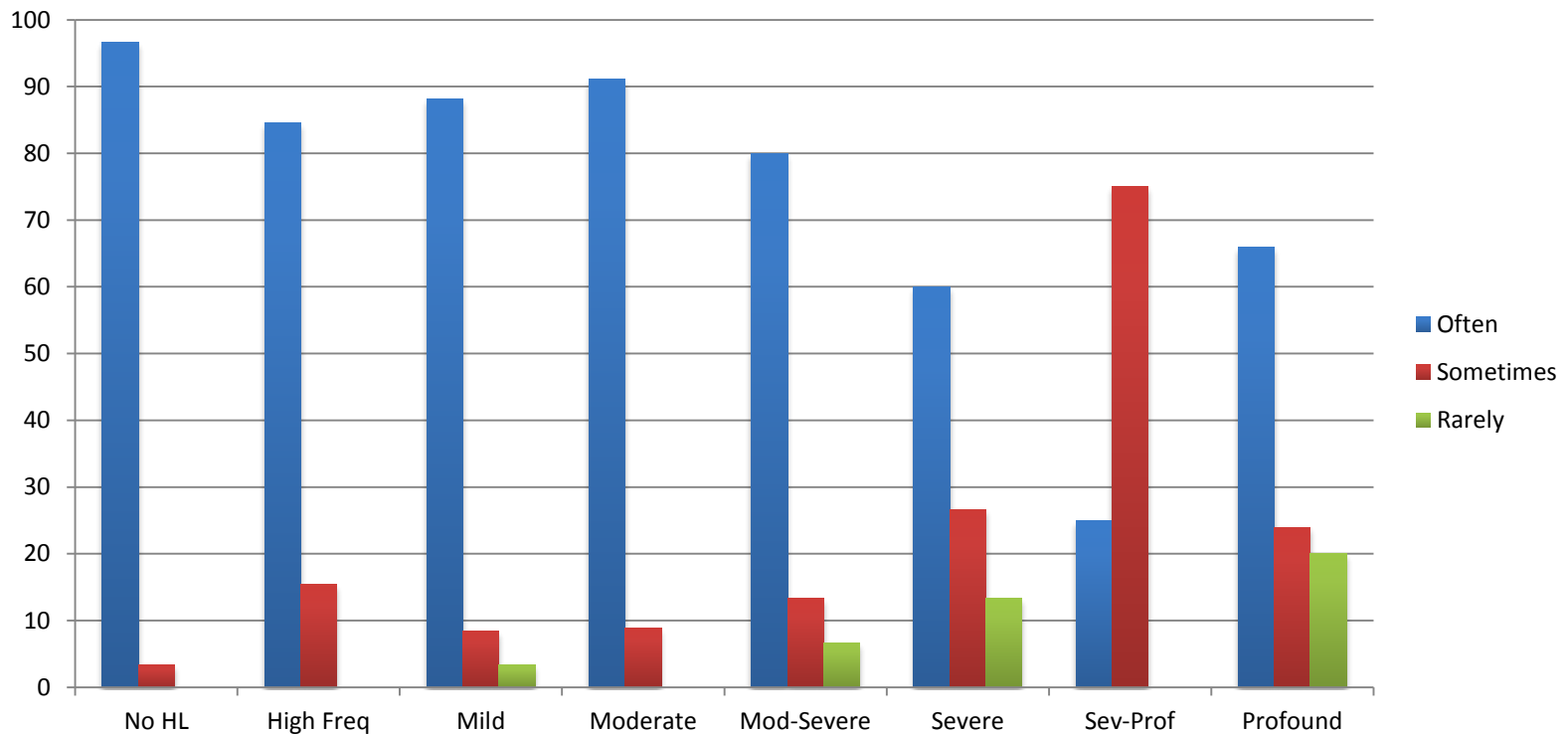


Tyberg, L., Beams, D., Sedey, A. & Yoshinaga-Itano, C. (2013)  
Item 6: Does your child detect the Ling Six Sounds  
(M, AH, OO, E, SH, S)? (NH)



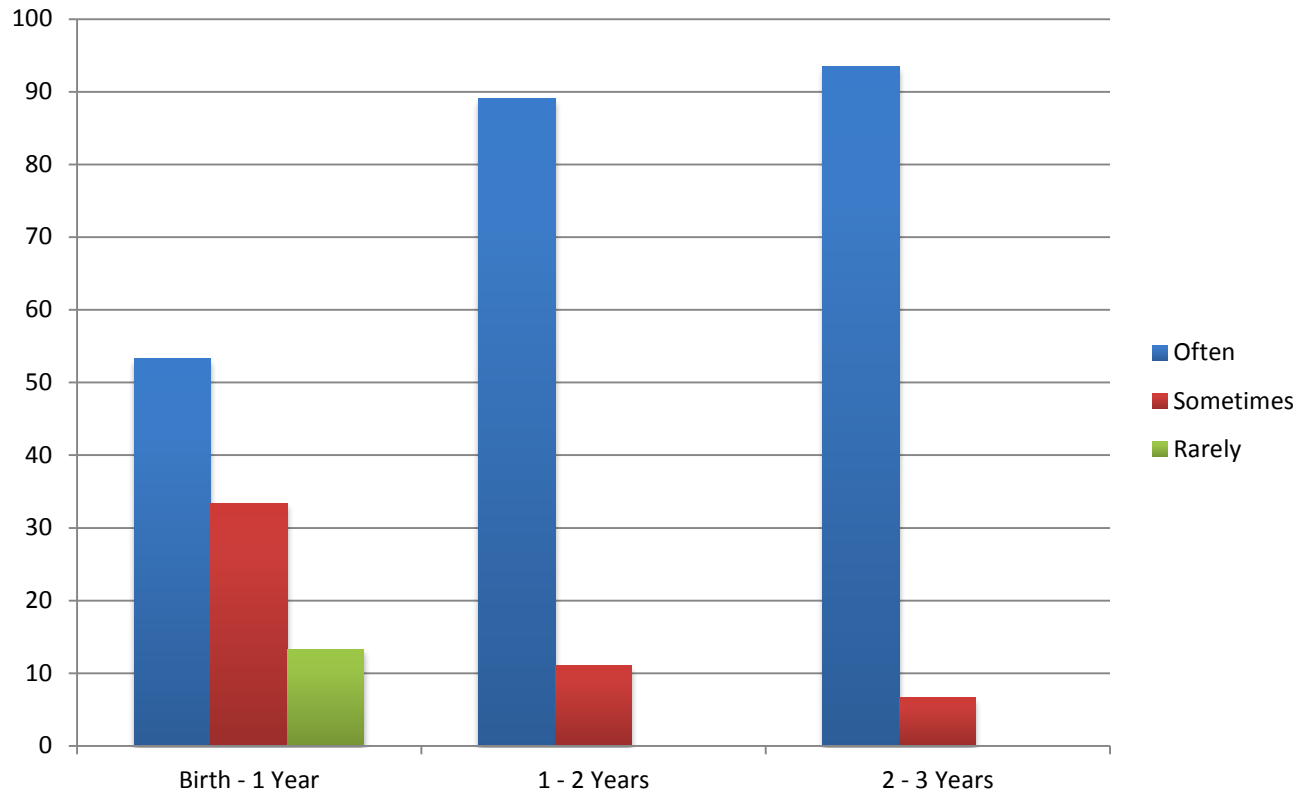
# Question 6 (Meagher et al., 2013, DHH)

- Does your child detect the Ling Six Sounds (, M, AH, OO, E, SH, S)?



Tyberg, L., Beams, D., Sedey, A. & Yoshinaga-Itano, C. (2013)

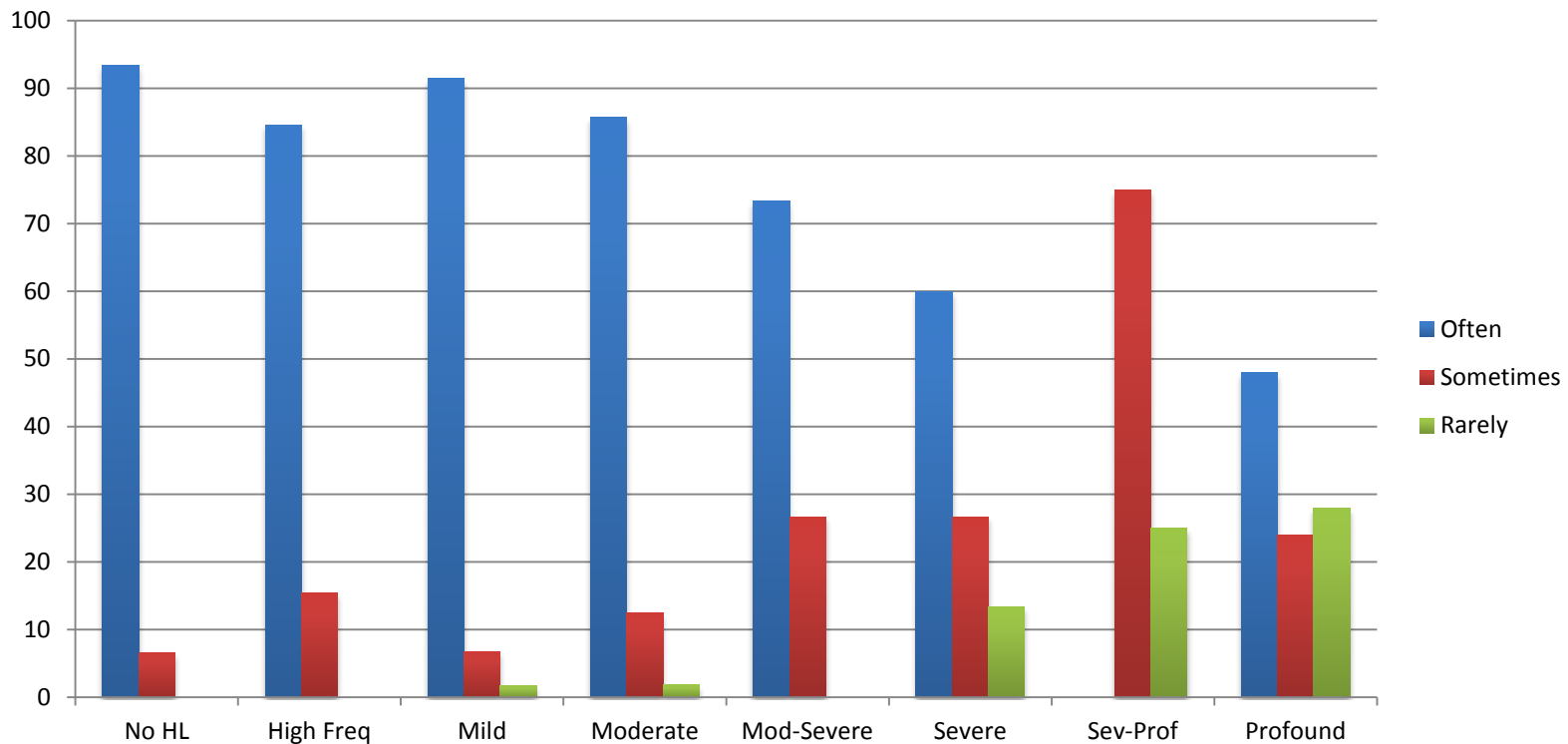
Item 7: Does your child detect the speaker's voice when background noise (softer than the speaker's voice) is present? (NH)





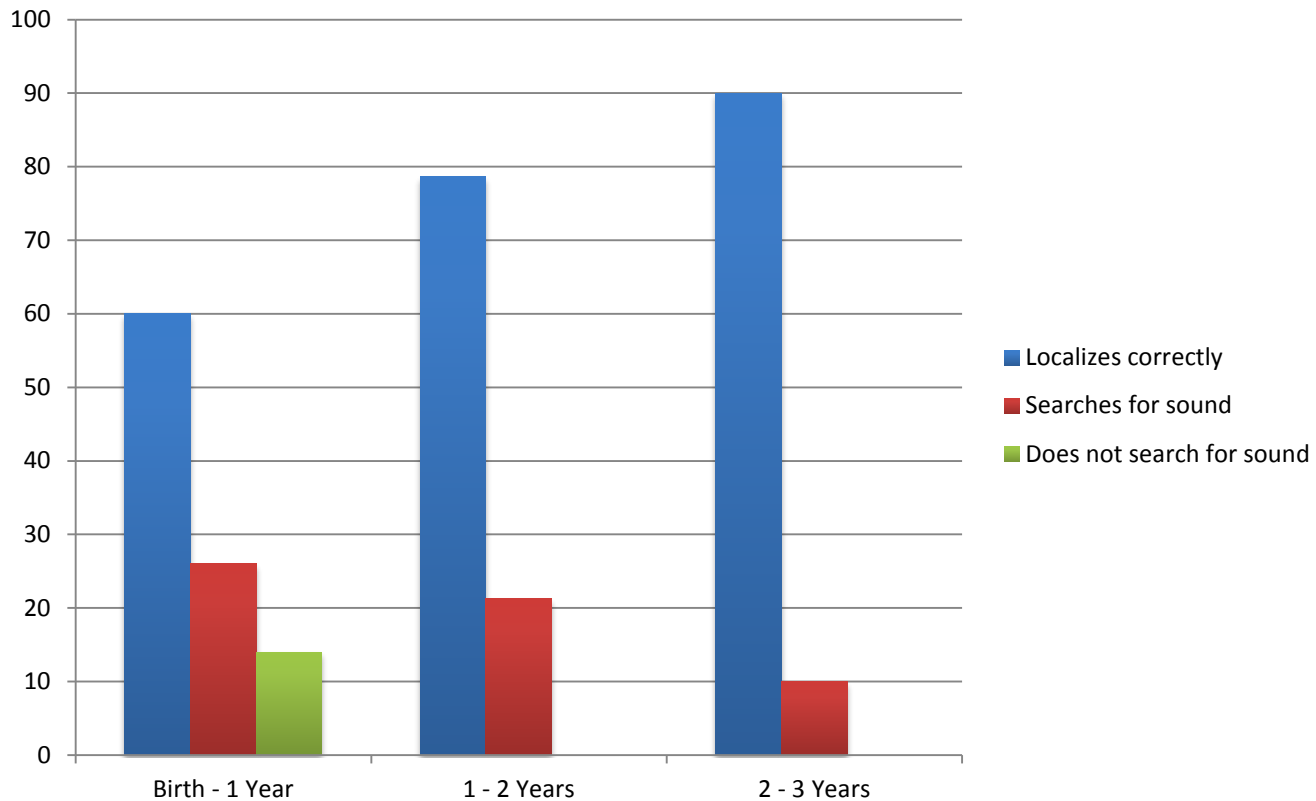
# Question 7 (Meagher et al., 2013, DHH)

- Does your child detect the speaker's voice when background noise is present?



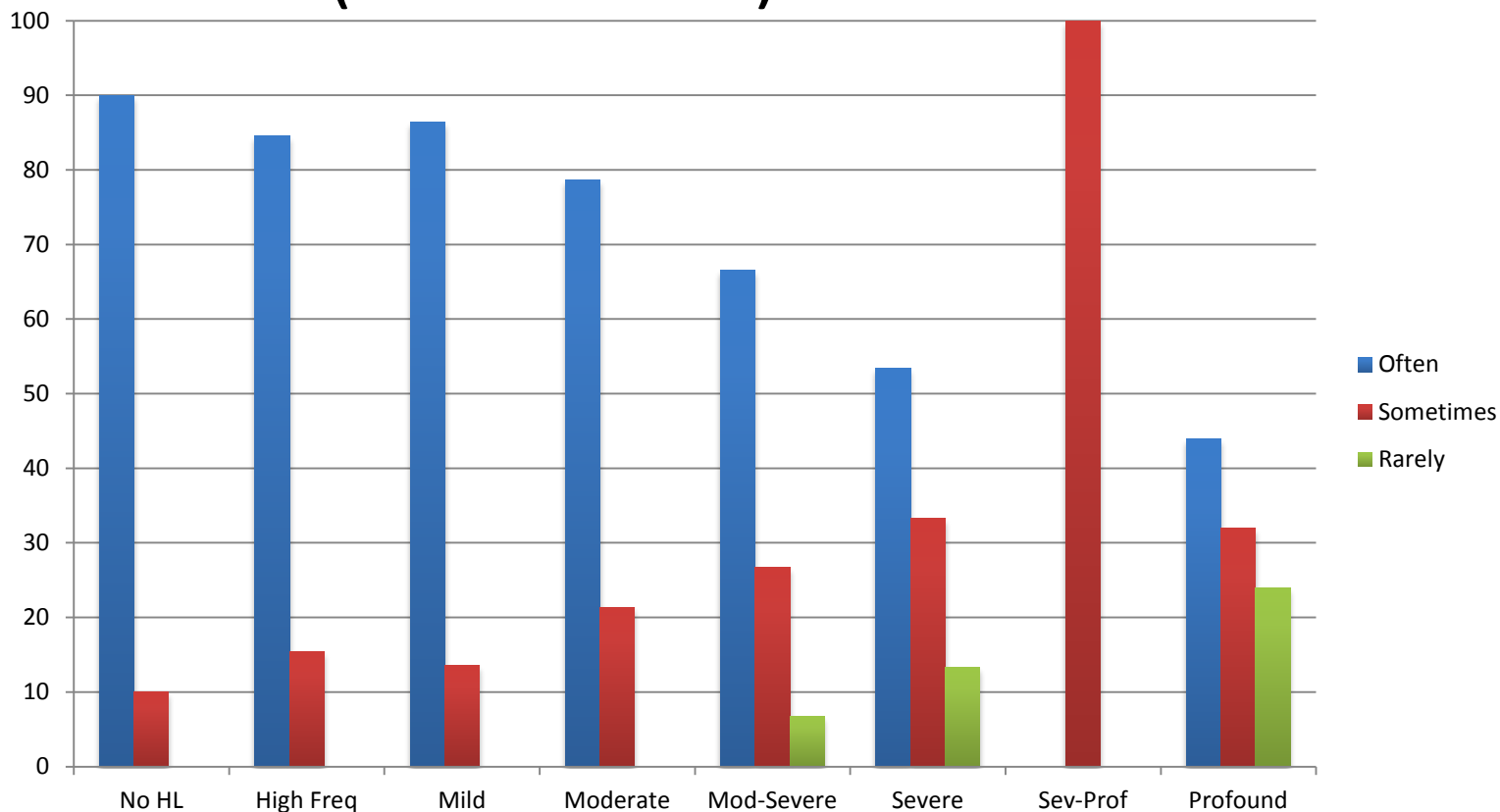
Tyberg, L., Beams, D., Sedey, A. & Yoshinaga-Itano, C. (2013)

Item 9: Does your child localize to the correct sound source (to the direction the sound is coming from)? (NH)

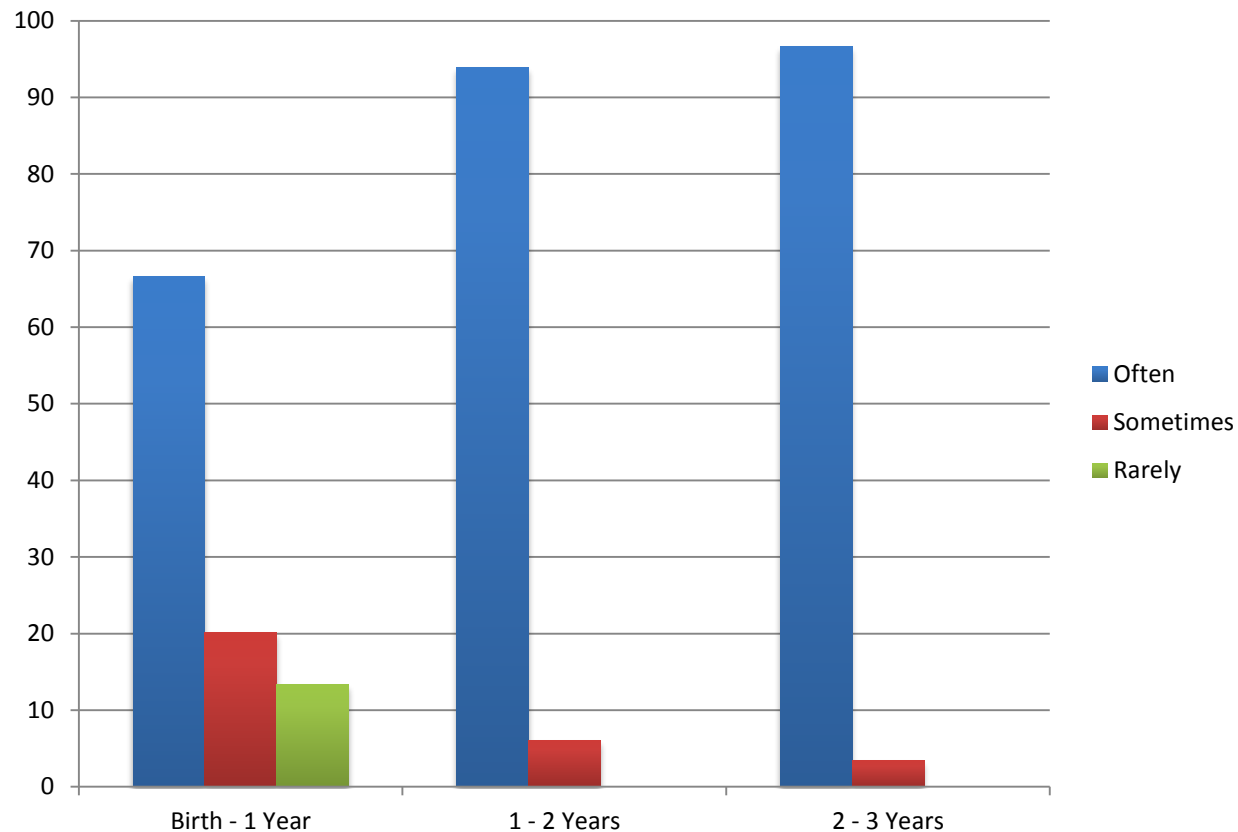


# Question 9 (Meagher et al., 2013, DHH)

- Does your child localize the the correct sound source? (27 – 36 mo.)

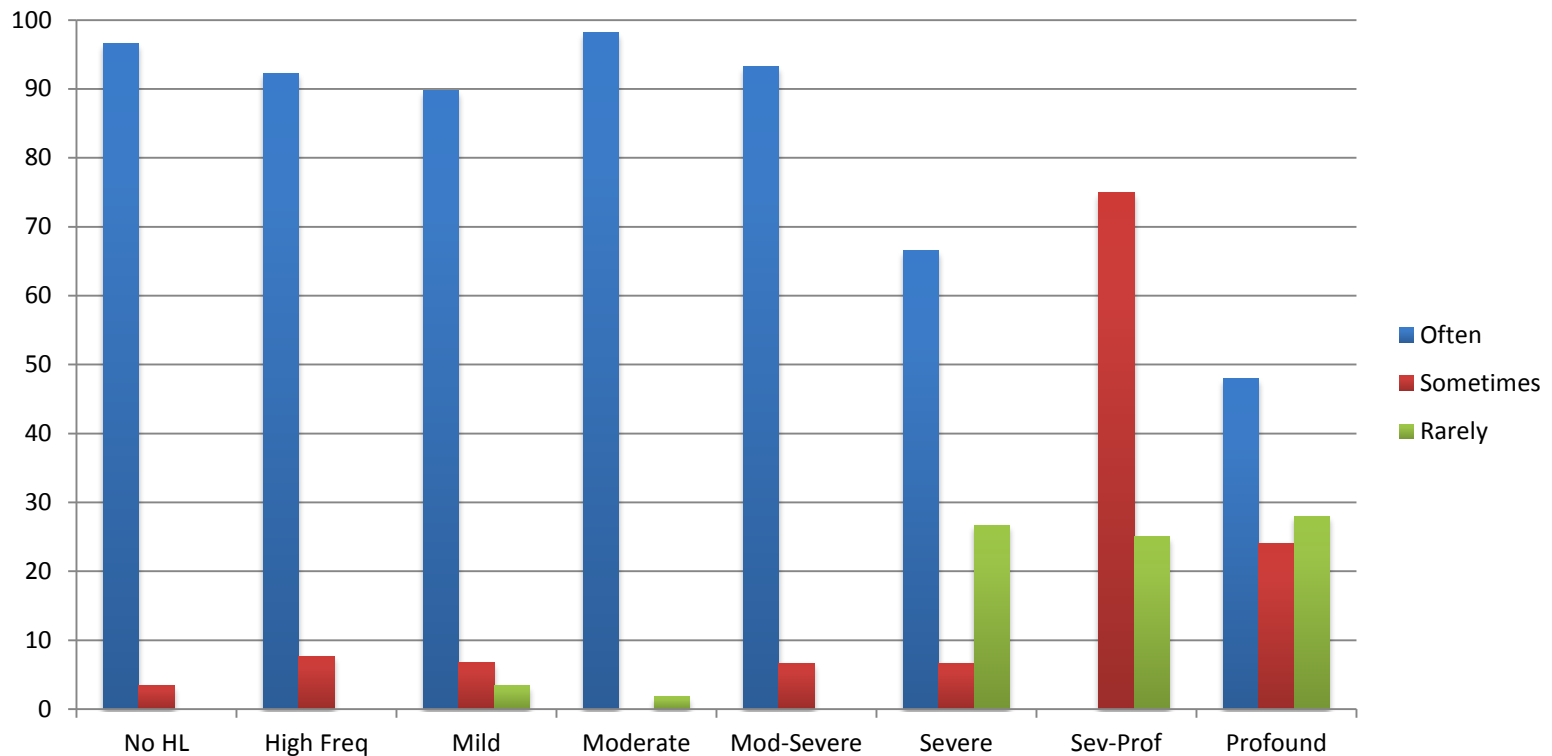


Tyberg, L., Beams, D., Sedey, A. & Yoshinaga-Itano, C. (2013)  
Item 10: Does your child notice a difference or respond differently between someone talking vs. a common environmental sound (difference between mom talking and someone clapping their hands)? (NH)



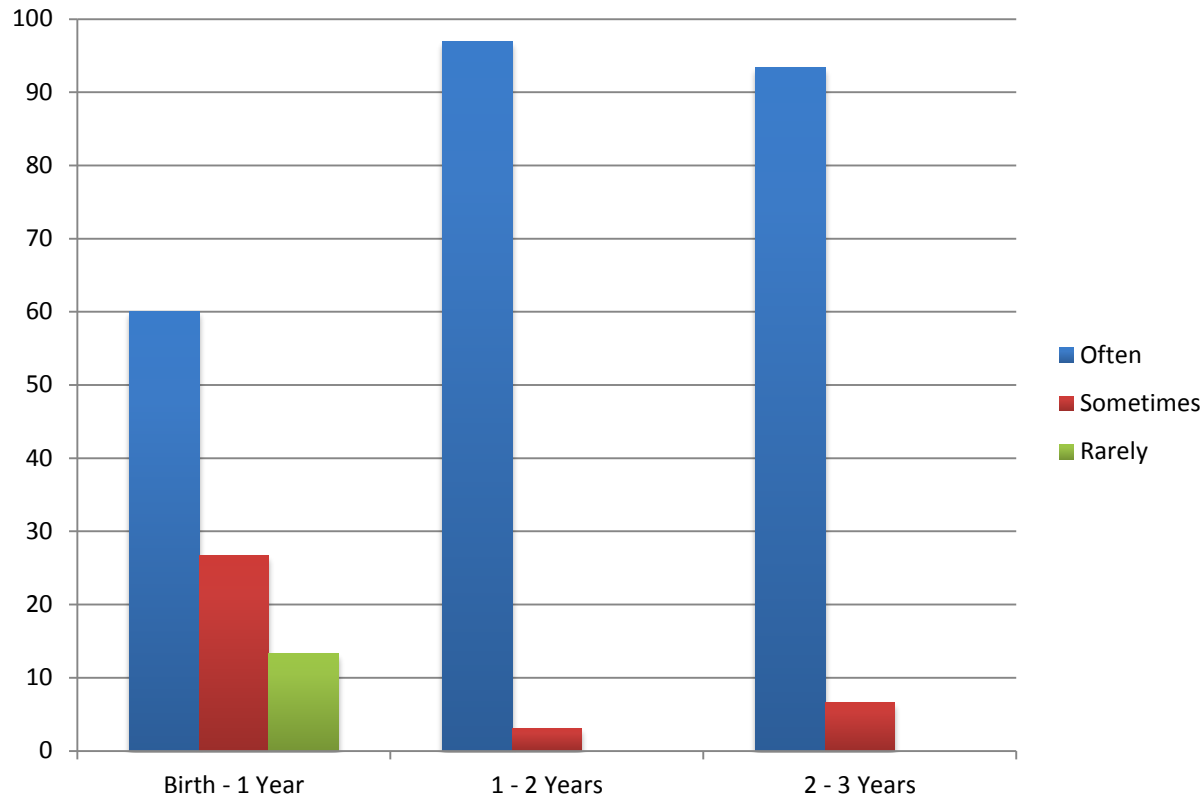
# Question 10 (Meagher et al., 2013, DHH)

- Does your child notice a difference or respond differently between someone talking vs. a common environmental sound? (27 – 36 mo.)



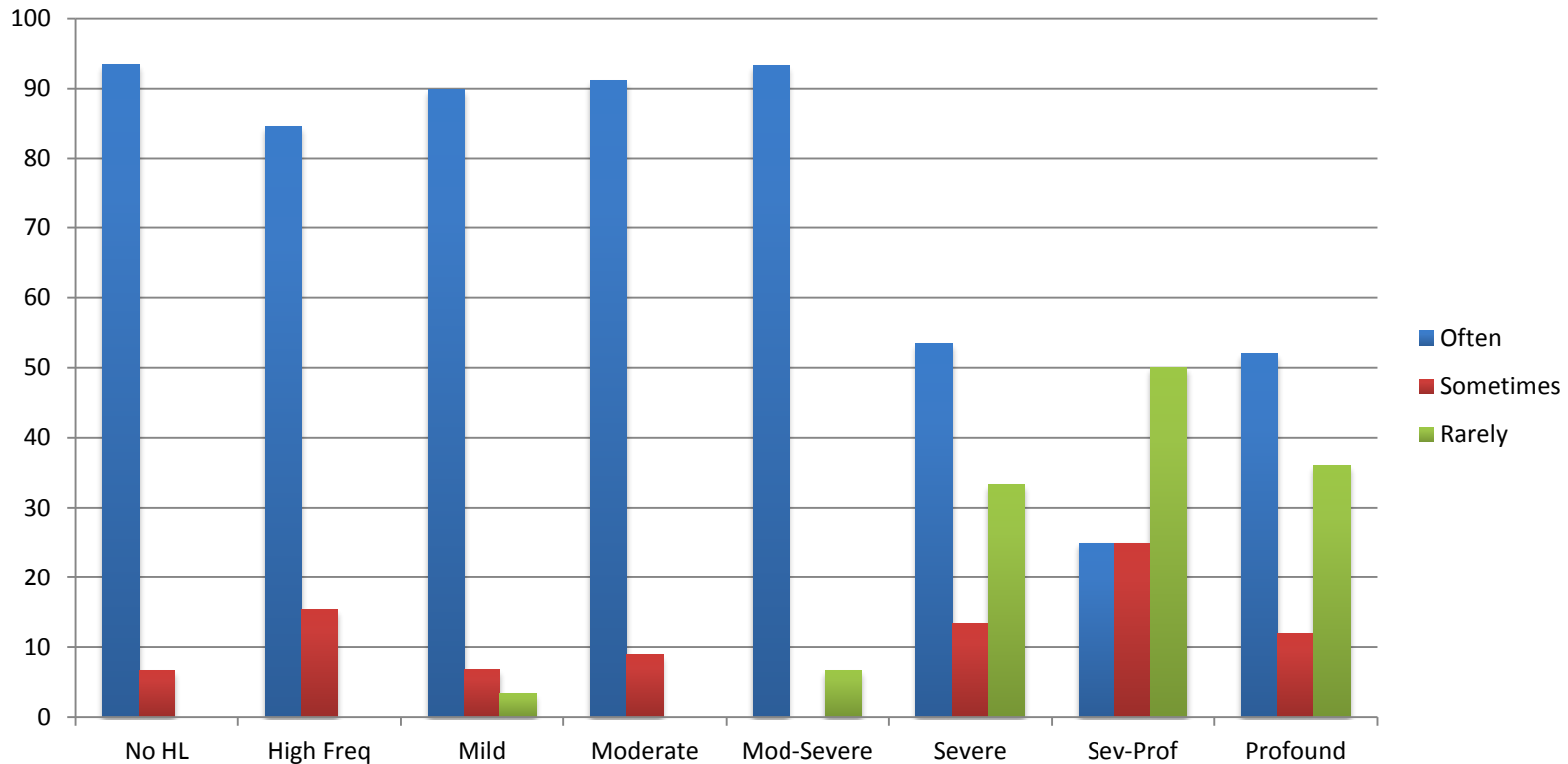
Tyberg, L., Beams, D., Sedey, A. & Yoshinaga-Itano, C. (2013)

Item 13: Does your child notice the difference (discriminate) between a person singing (for example “Happy Birthday”) from a person having a conversation? (NH)



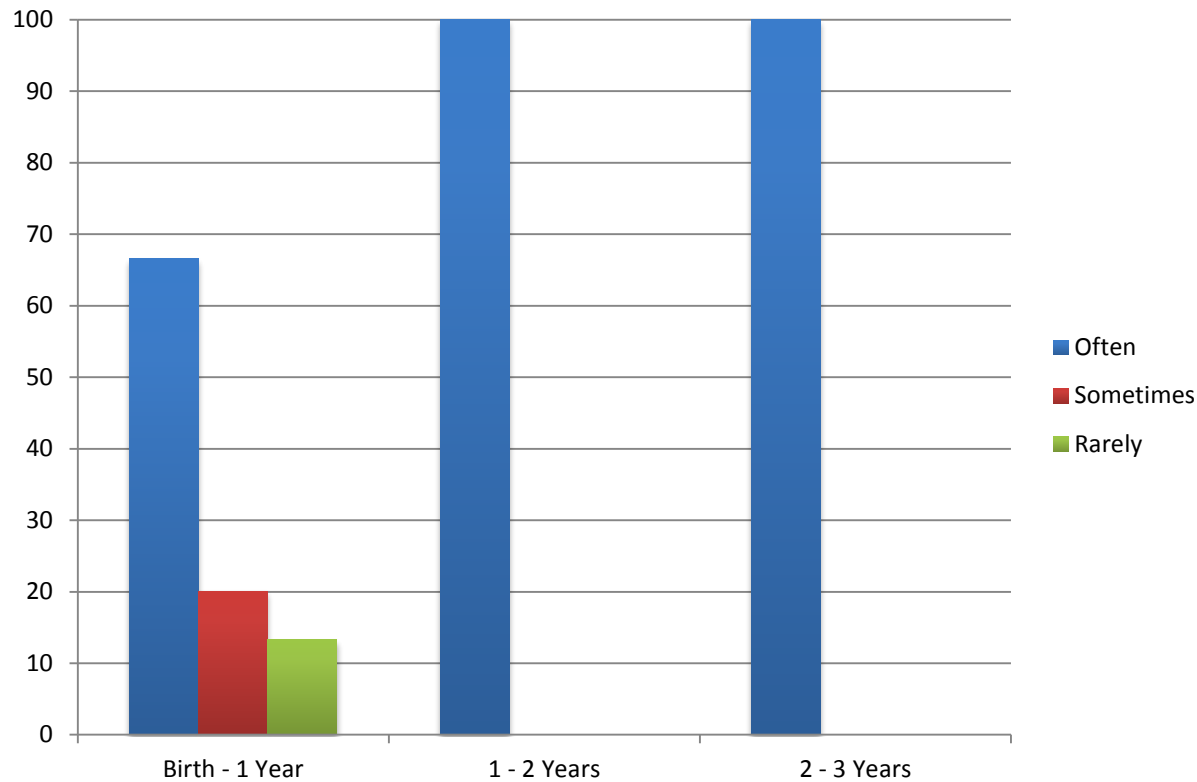
# Question 13 (Meagher et al., 2013, DHH)

- Does your child notice a difference (discriminate) between a person singing from a person having a conversation? (27 – 36 mo.)



Tyberg, L., Beams, D., Sedey, A. & Yoshinaga-Itano, C. (2013)

Item 14: Does your child notice the difference between family members' voices (for example: Dad's voice vs. Mom's voice vs. a sibling's voice)? (NH)





# Question 14 (Meagher et al., 2013, DHH)

- Does your child notice the difference between family members' voices? (27 to 36 mo.)

