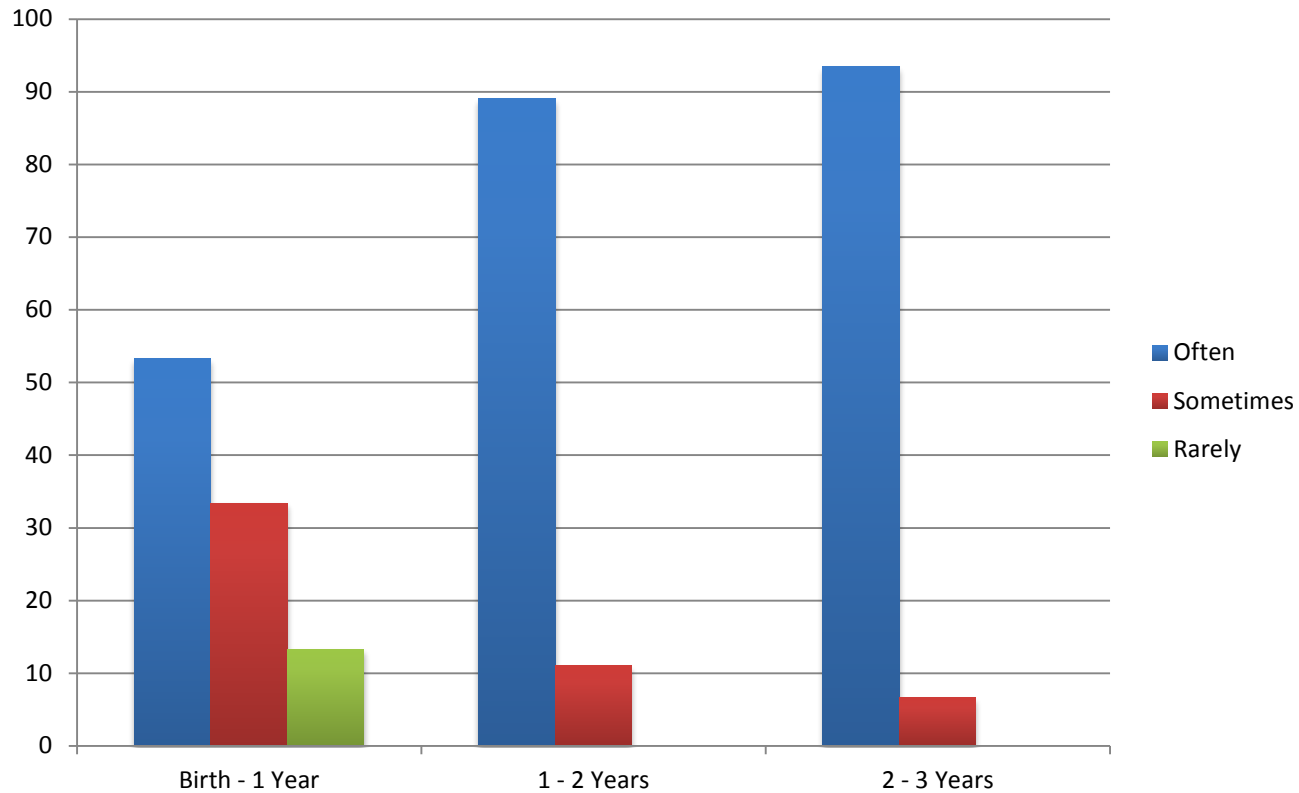


50%+ of children with normal hearing mastered these skills between 0-12 months

- Item 7: Does your child detect the speaker's voice when background noise (softer than the speaker's voice) is present?
- Item 8: Does your child search to find out where a sound is coming from?
- Item 11: Does your child notice a difference or respond differently between different environmental sounds (for example: dog barking versus a telephone ringing)?
- Item 12: Does your child notice a difference or respond differently between a speaker using a soft voice (a whisper) and a speaker using a loud voice (above conversational range)?

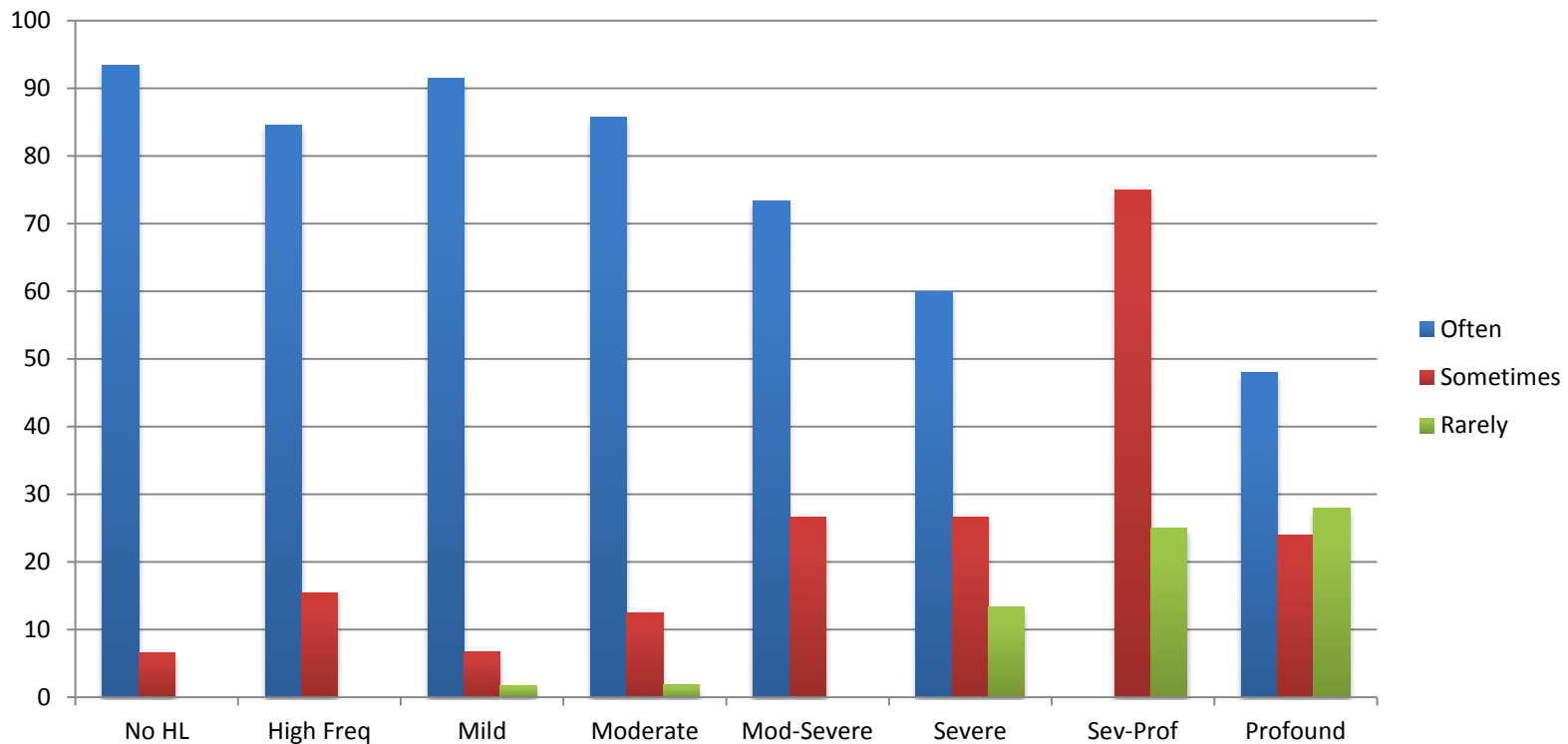
Tyberg, L., Beams, D., Sedey, A. & Yoshinaga-Itano, C. (2013)

Item 7: Does your child detect the speaker's voice when background noise (softer than the speaker's voice) is present? (NH)

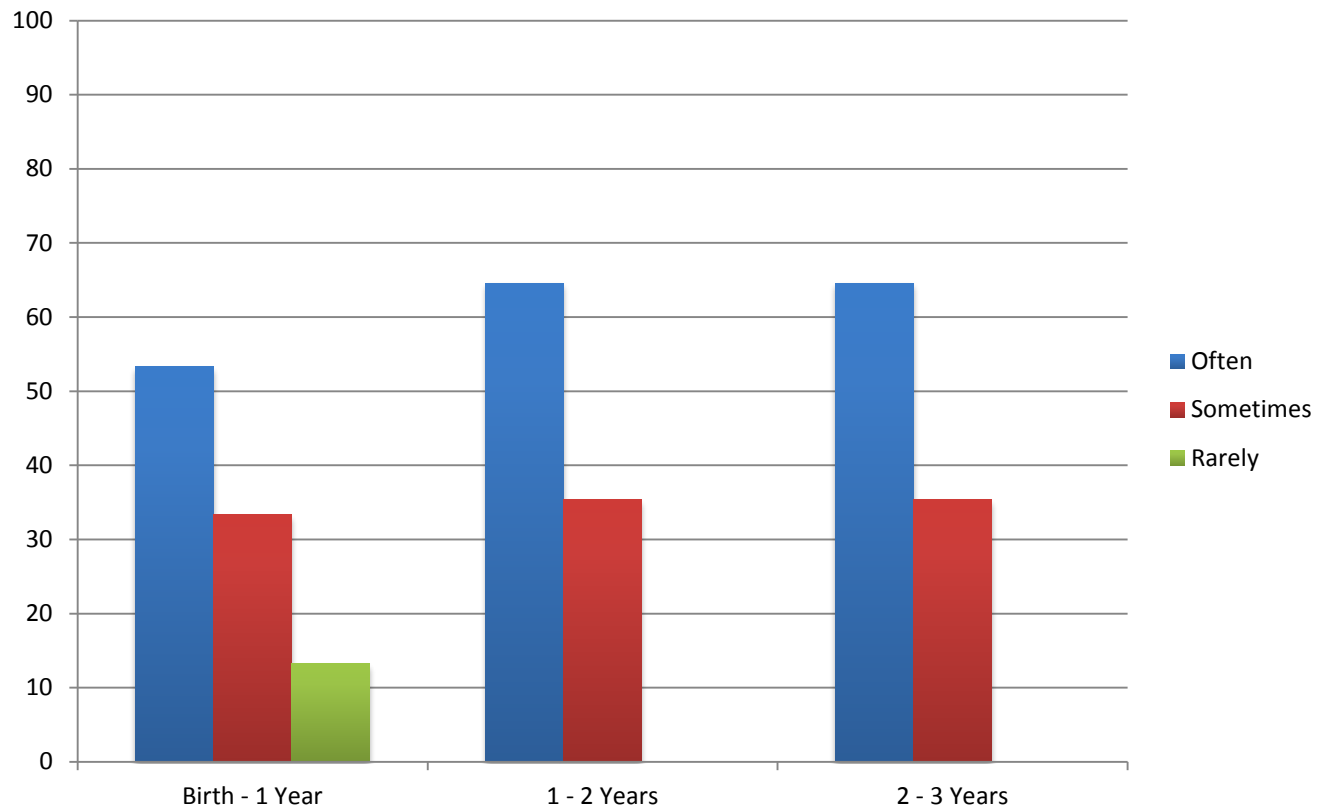


Question 7 (Meagher et al., 2013, DHH) (27-36 mo.)

- Does your child detect the speaker's voice when background noise is present?

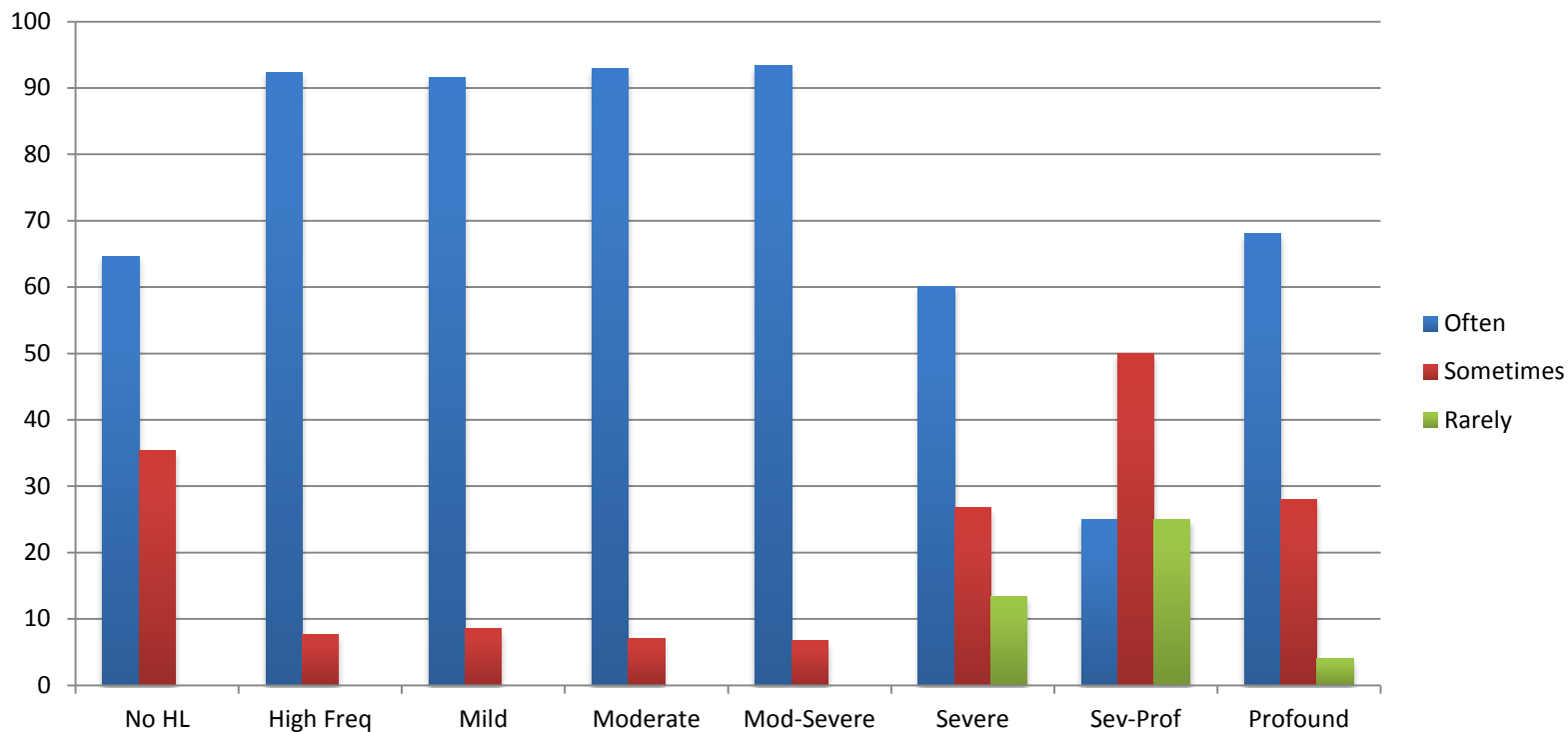


Tyberg, L., Beams, D., Sedey, A. & Yoshinaga-Itano, C. (2013)
Item 8: Does your child search to find out where a sound is coming from? (NH)



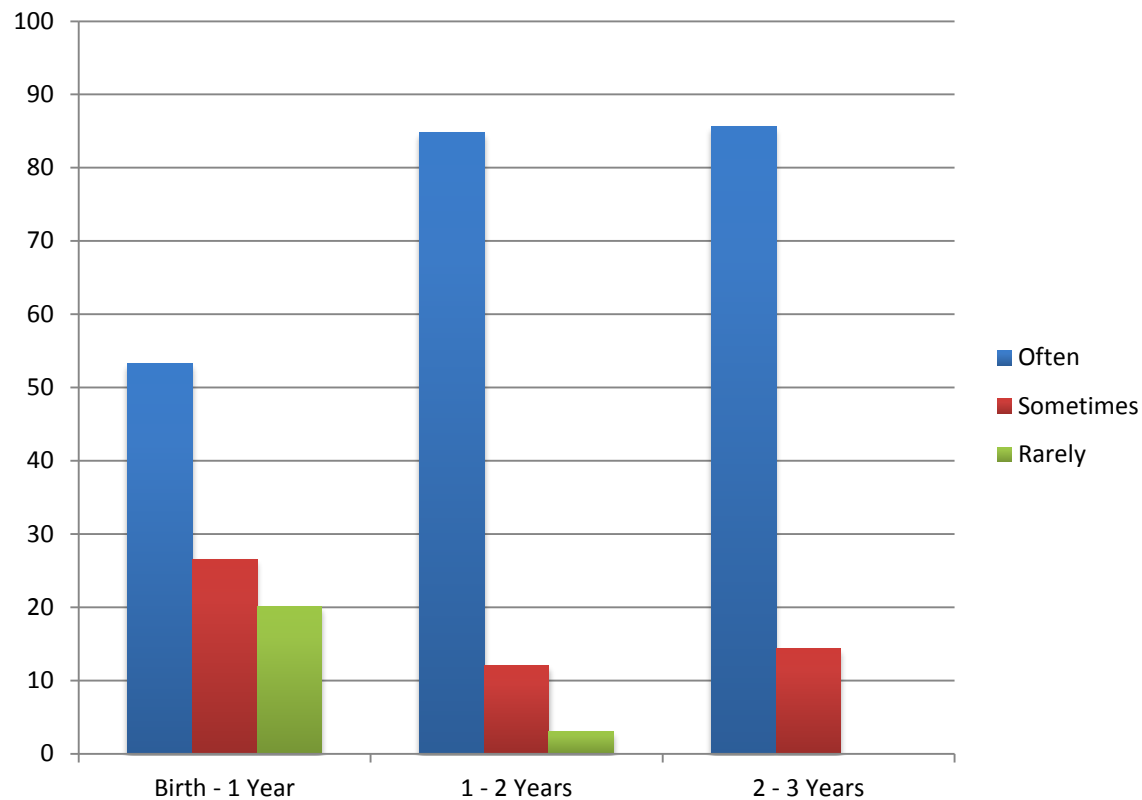
Question 8 (Meagher et al., 2013, DHH) (27-36 mo.)

- Does your child search to find out where a sound is coming from?



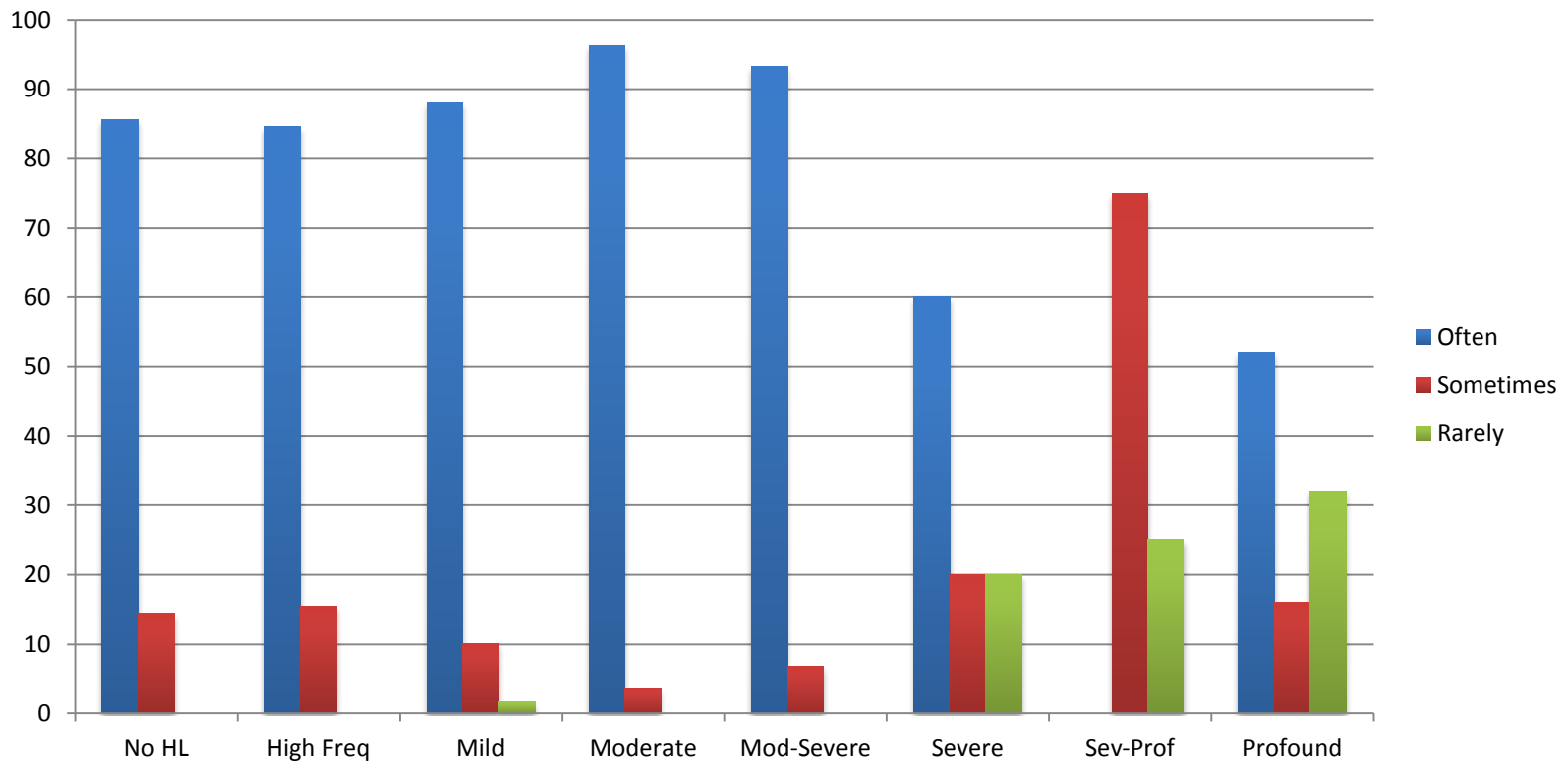
Tyberg, L., Beams, D., Sedey, A. & Yoshinaga-Itano, C. (2013)

Item 11: Does your child notice a difference or respond differently between different environmental sounds (for example: dog barking versus a telephone ringing)? (NH)



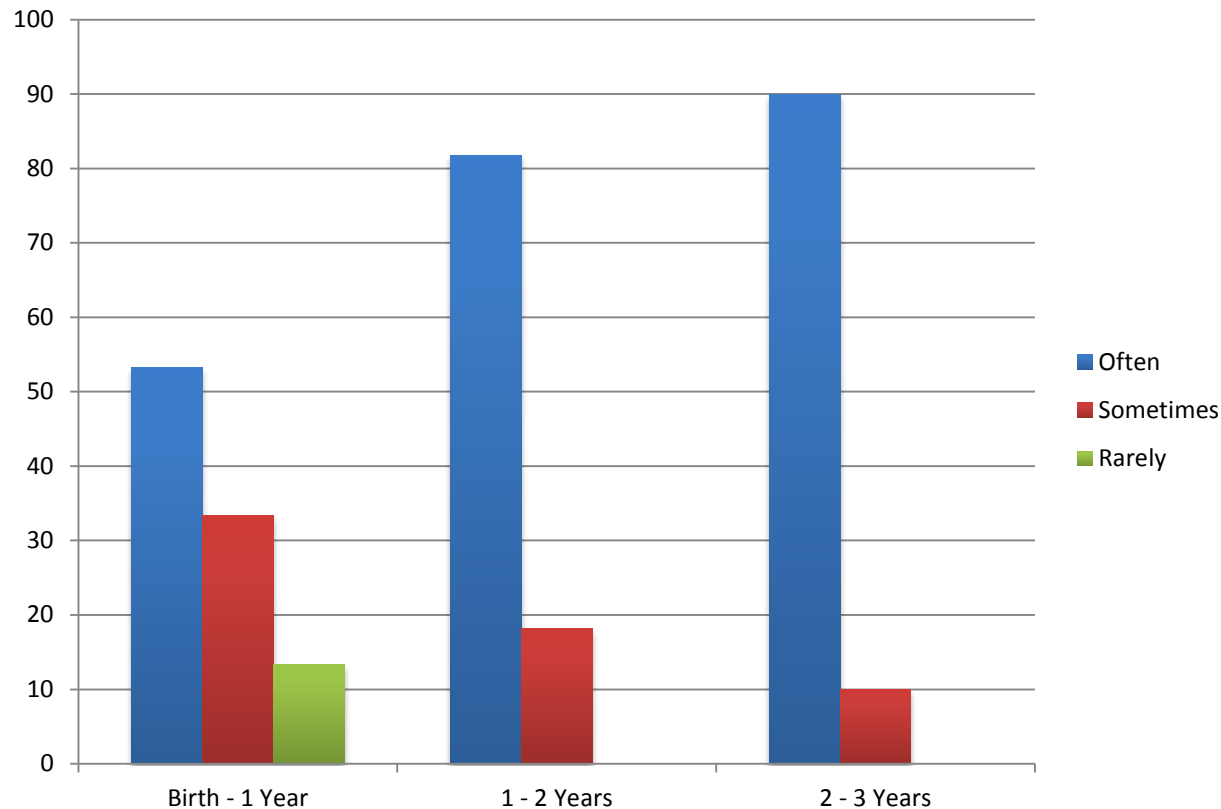
Question 11 (Meagher et al., 2013, DHH)

- Does your child notice a difference or respond differently between different environmental sounds? (27-36 mo.)



Tyberg, L., Beams, D., Sedey, A. & Yoshinaga-Itano, C. (2013)

Item 12: Does your child notice a difference or respond differently between a speaker using a soft voice (a whisper) and a speaker using a loud voice (above conversational range)? (NH)



Question 12 (Meagher et al., 2013, DHH)

- Does your child notice a difference or respond differently between a speaker using a soft voice and a speaker using a loud voice? (27-36 mo.)

