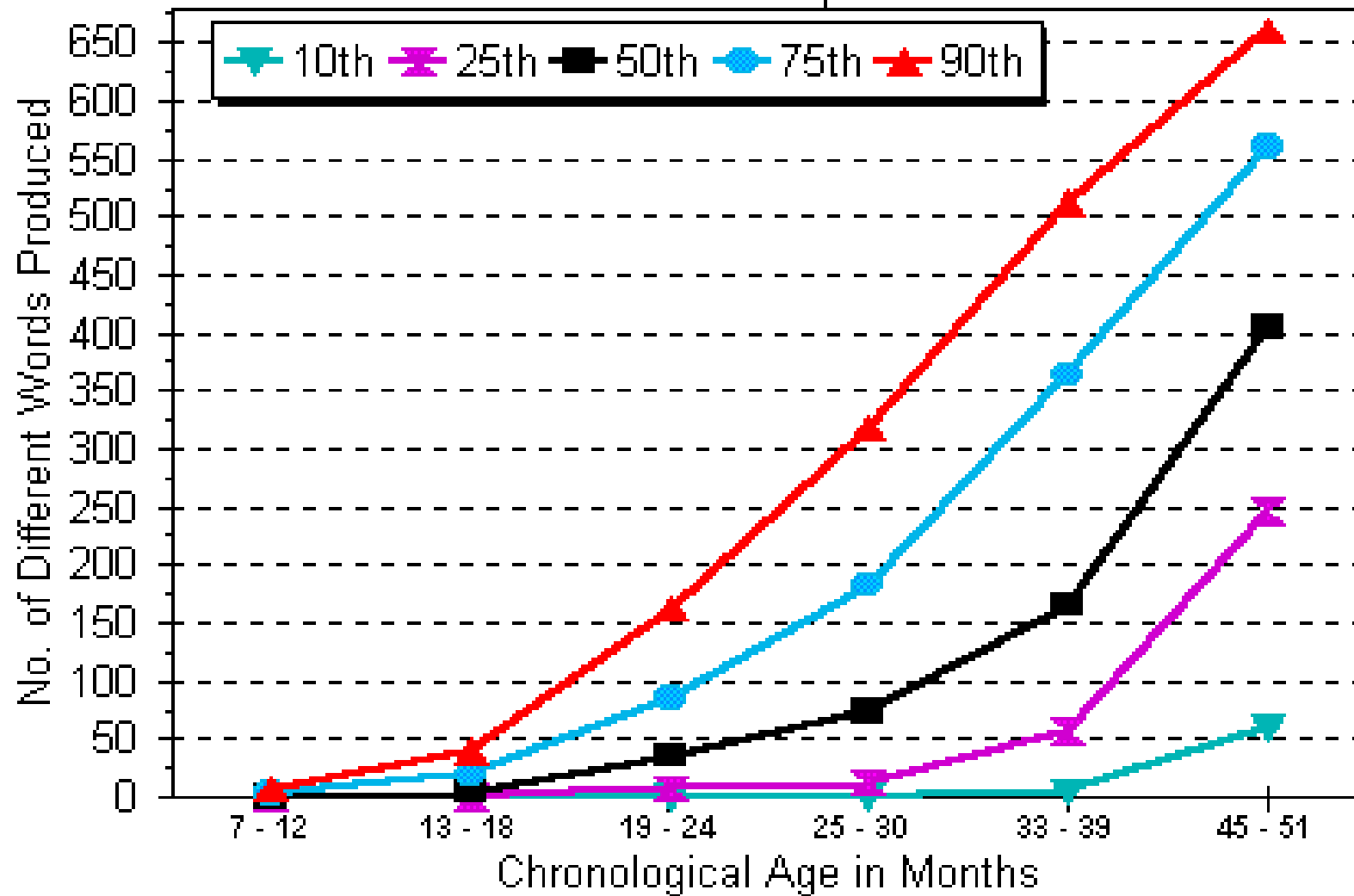


Words produced

WORDS PRODUCED

# MacArthur CDI: Words Produced

*Total Group*

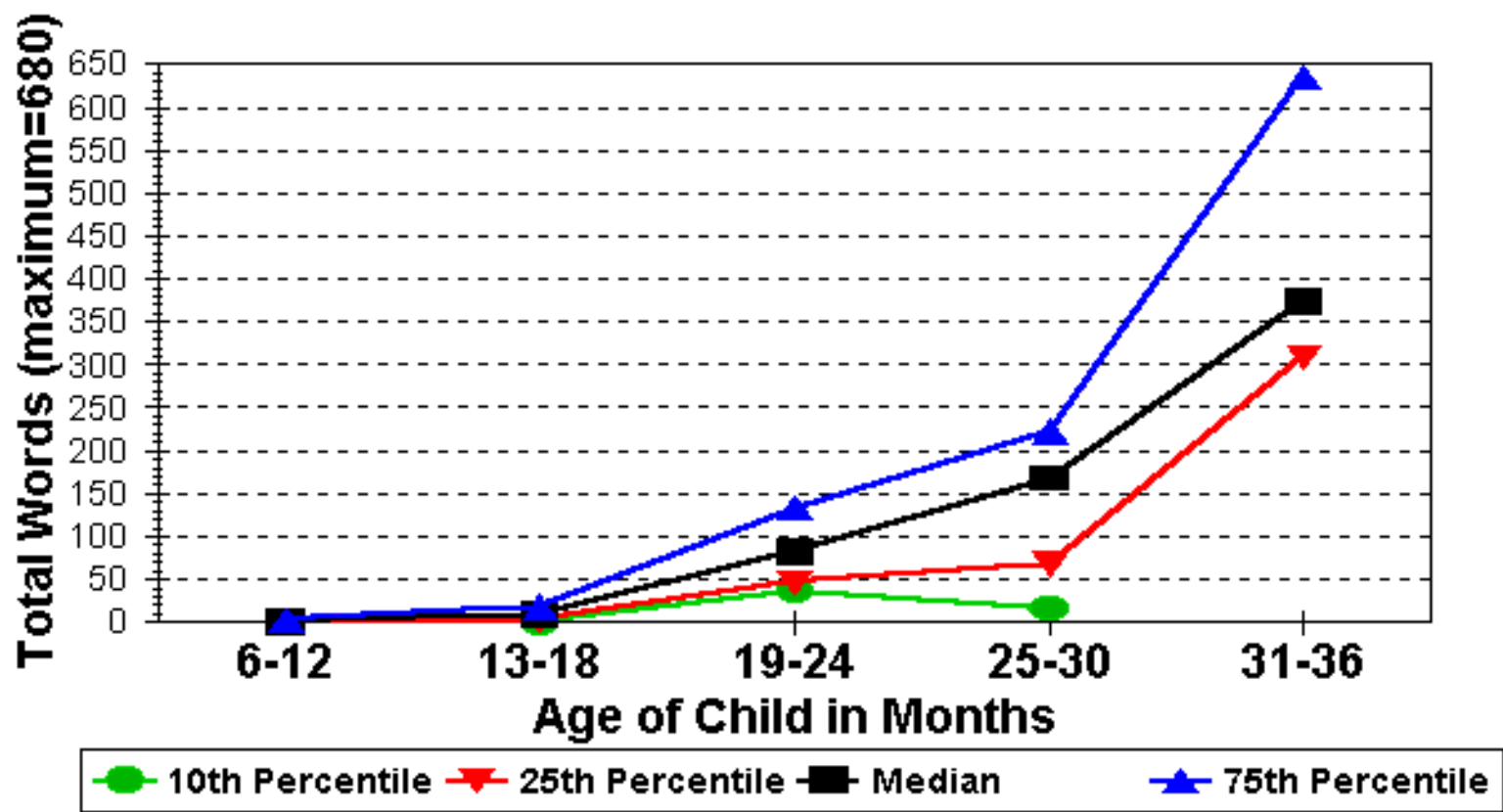


month) vs late  
identification (after 6  
months) – normal  
cognition

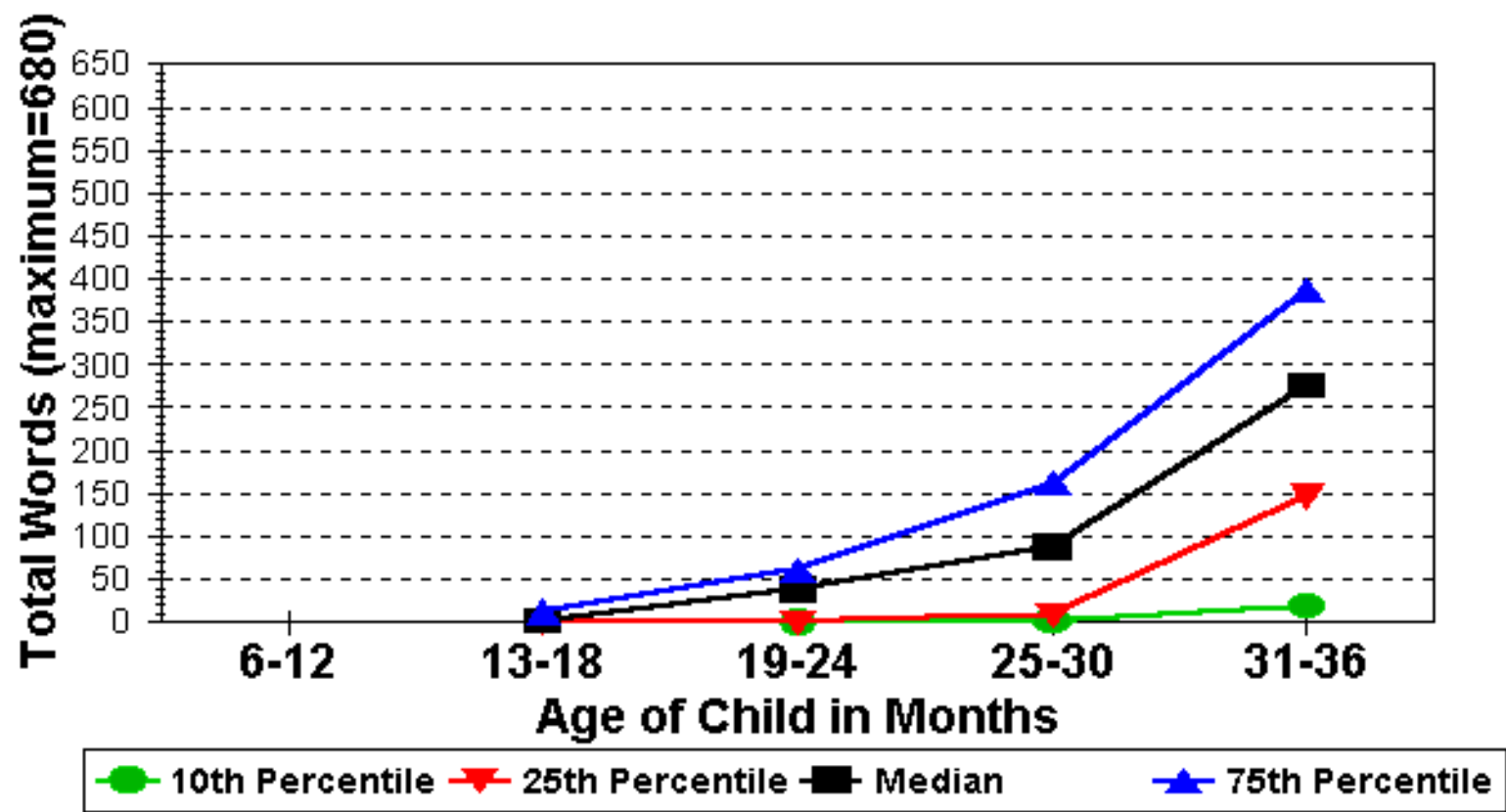
w

# Total Words Produced:

*Normal Cognition/Early Identification*



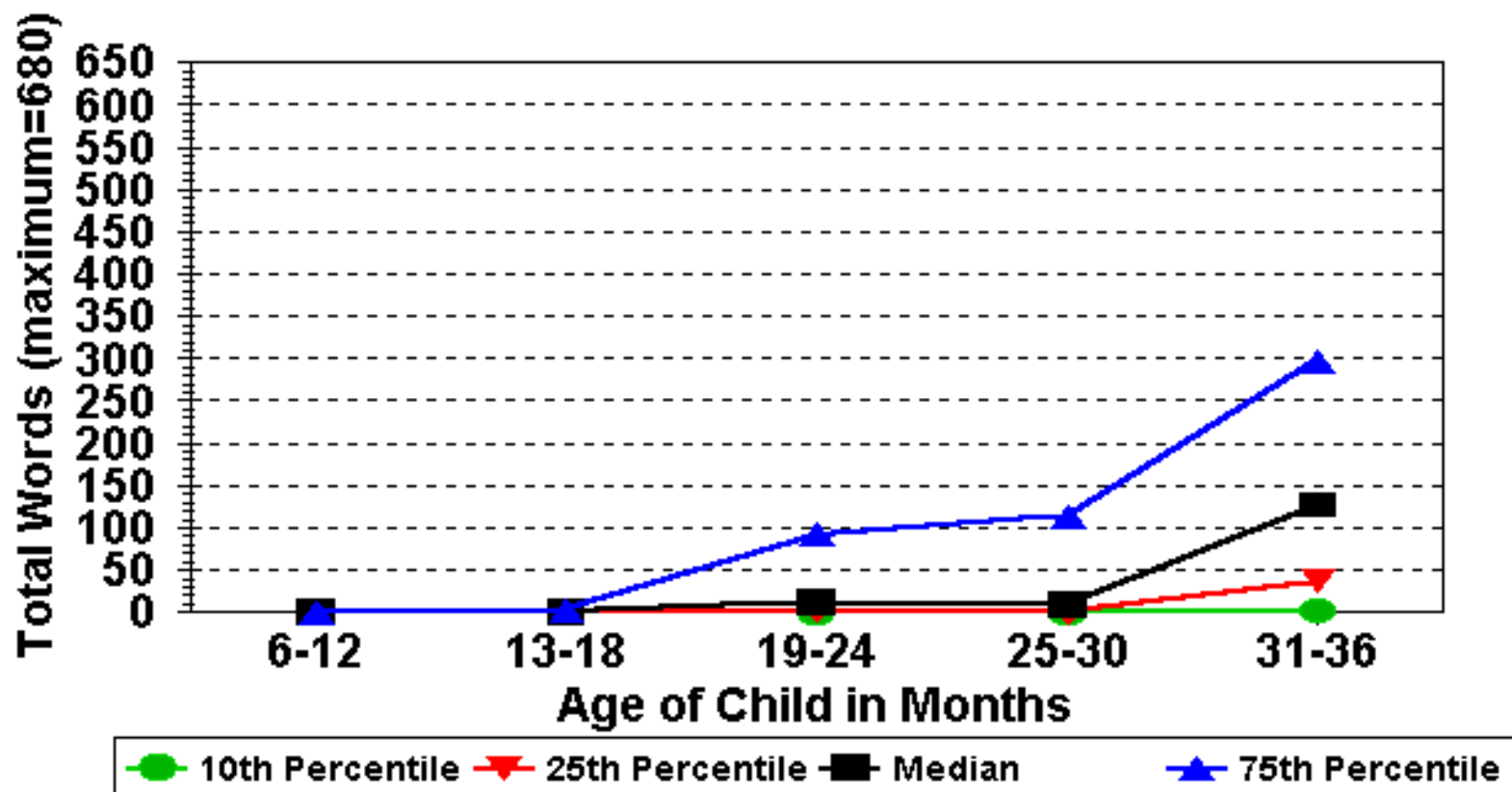
## Total Words Produced: *Normal Cognition/Late Identification*



identification (by 6  
months) vs late  
identification (after 6  
months)- low cognition

# Total Words Produced:

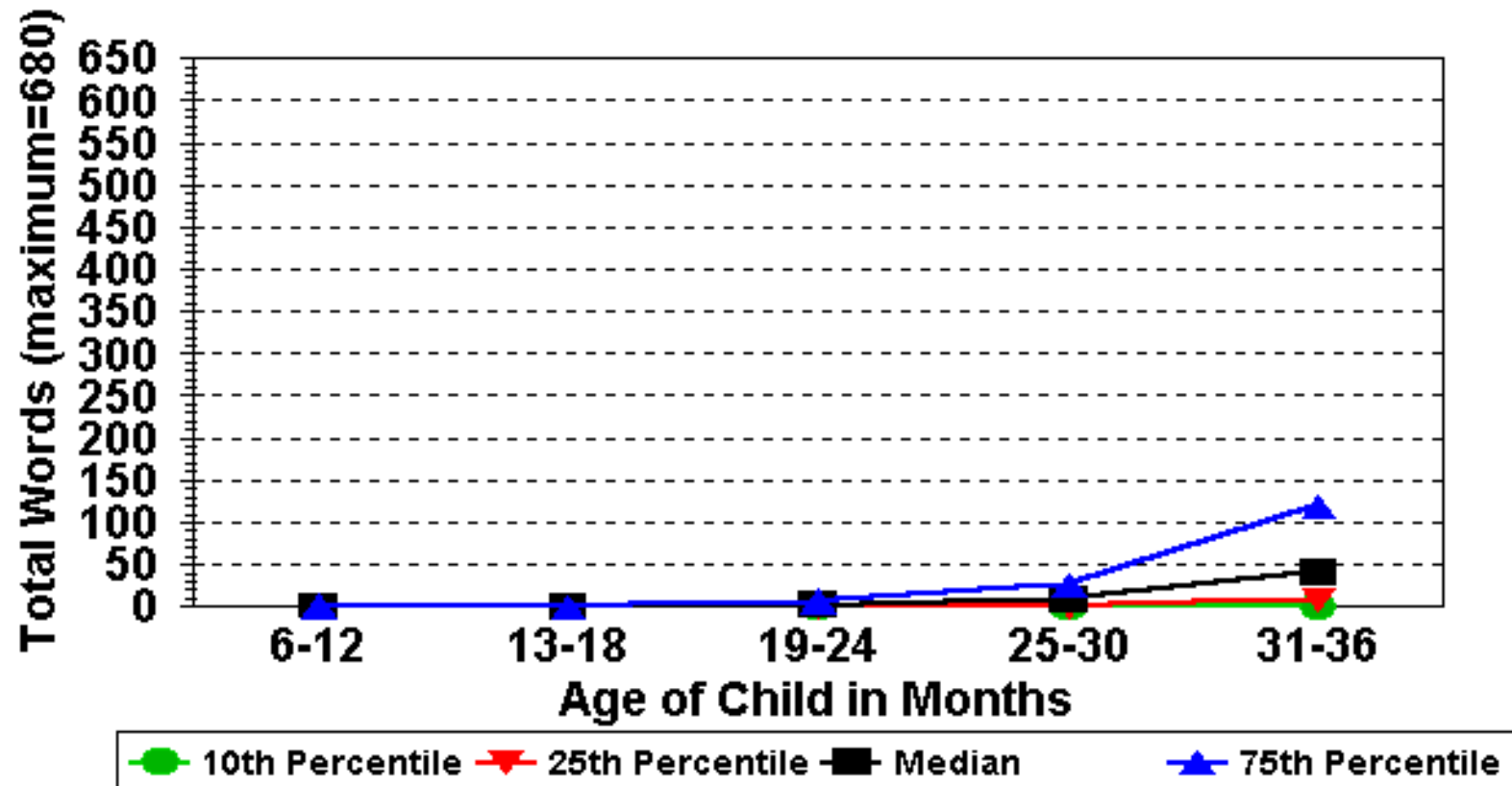
*Low Cognition & Early Identification*





# Total Words Produced:

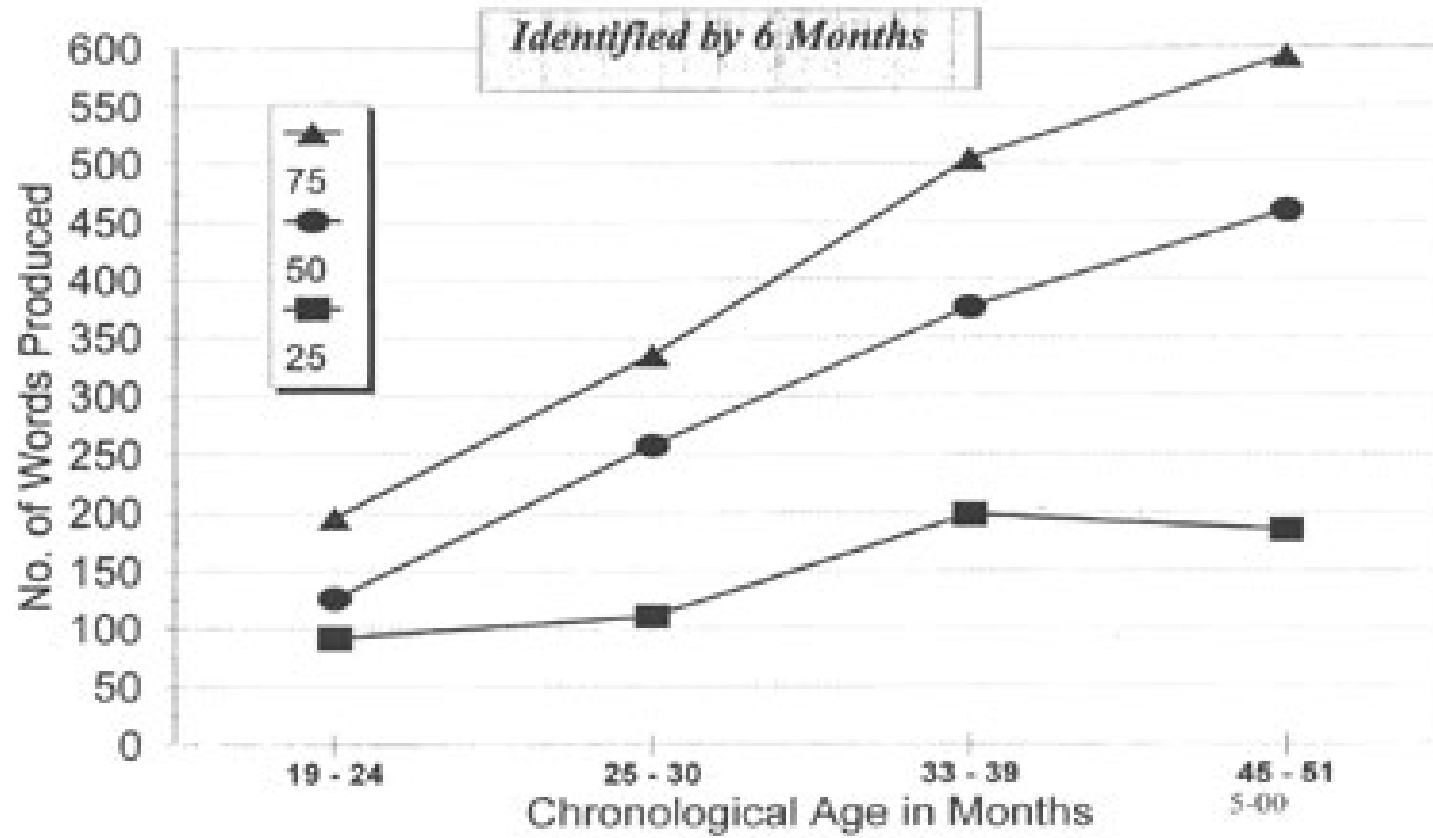
*Low Cognition & Late Identification*



All children by age of  
identification

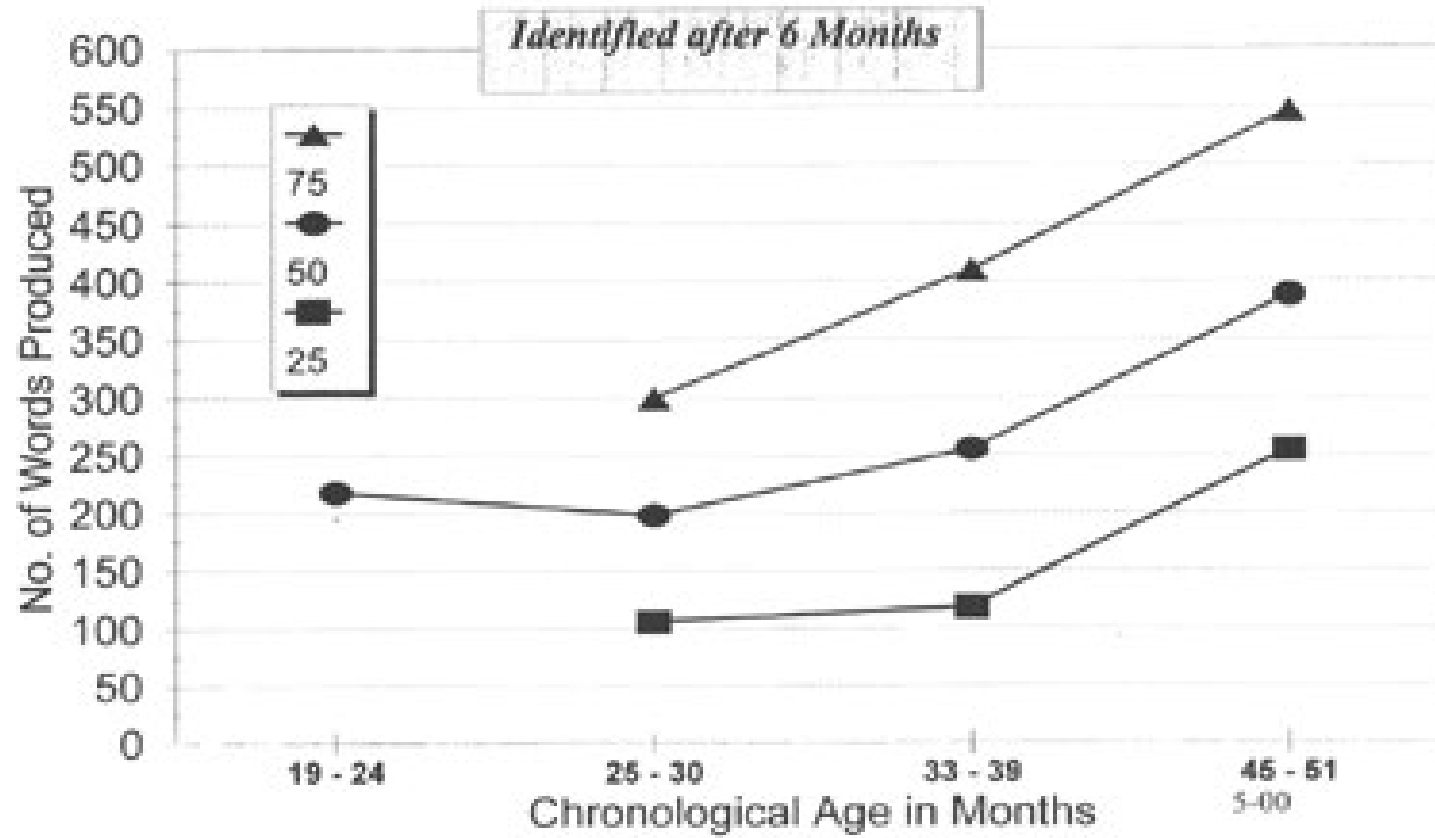
# Words Produced

MacArthur Words & Sentences



# Words Produced

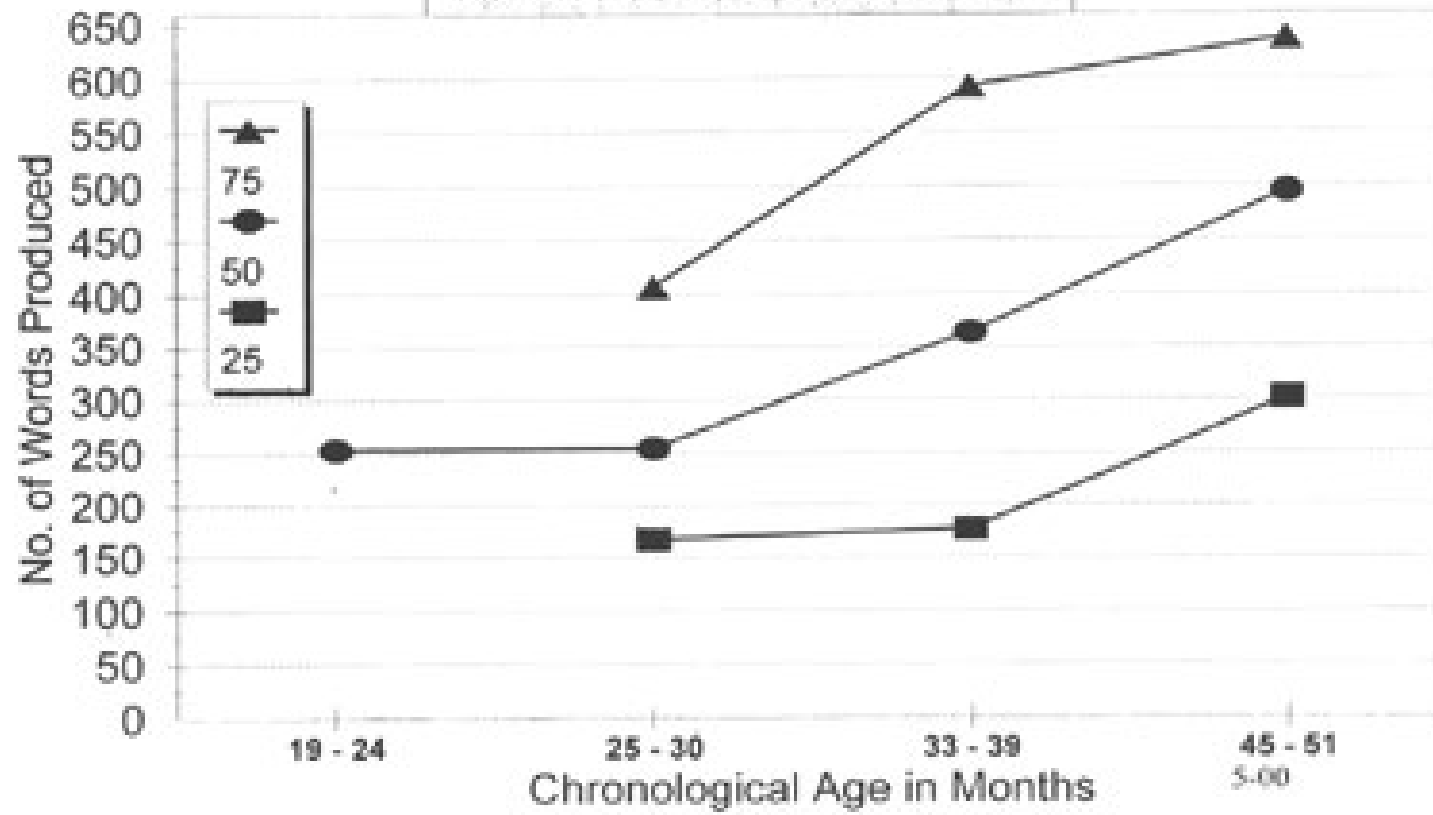
MacArthur Words & Sentences



All children by degree of hearing  
loss

**Words Produced**  
*MacArthur Words & Sentences*

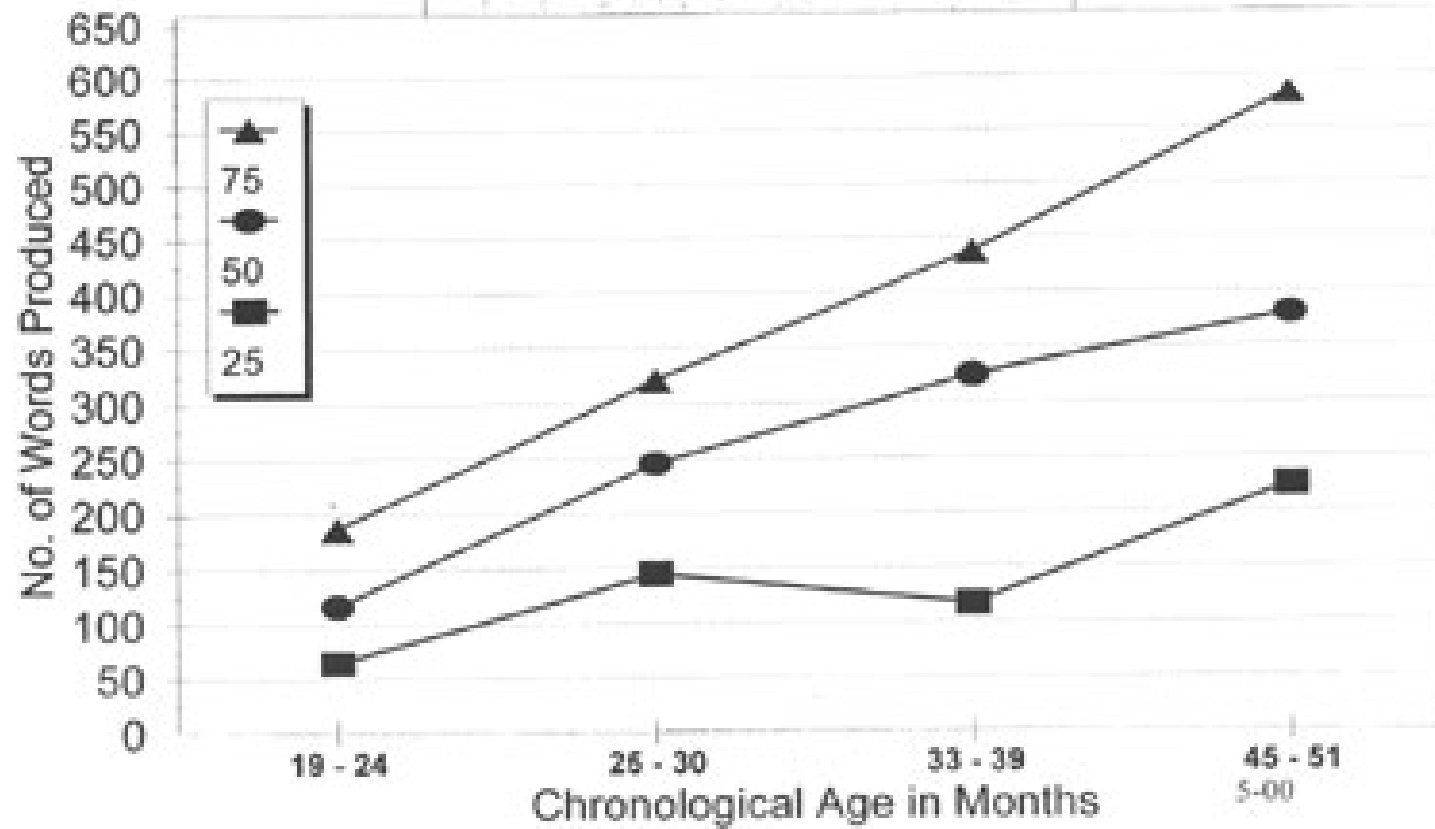
*Mild or Moderate Hearing Loss*



# Words Produced

MacArthur Words & Sentences

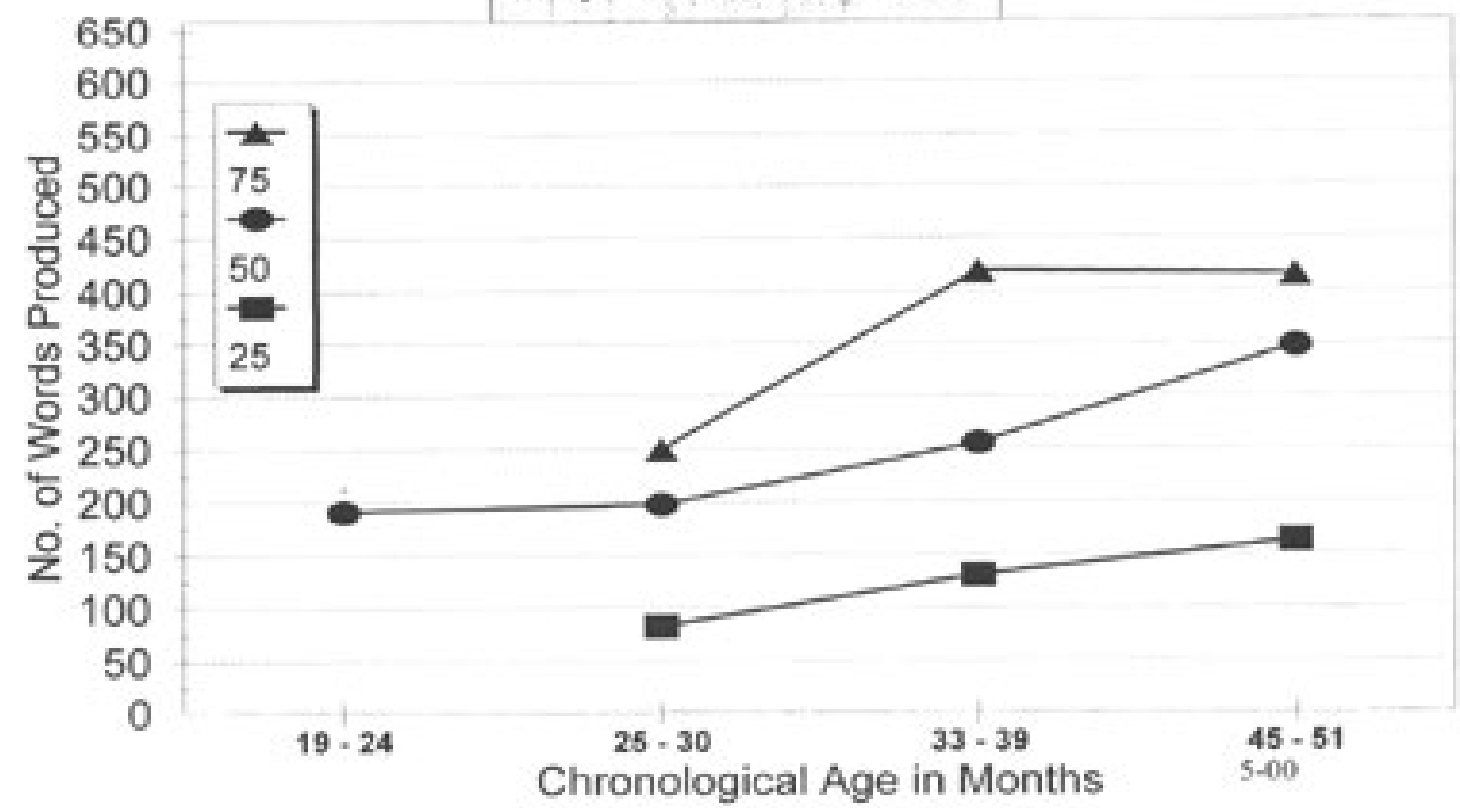
*Mod-Sev or Severe Hearing Loss*



# Words Produced

MacArthur Words & Sentences

*Profound Hearing Loss*



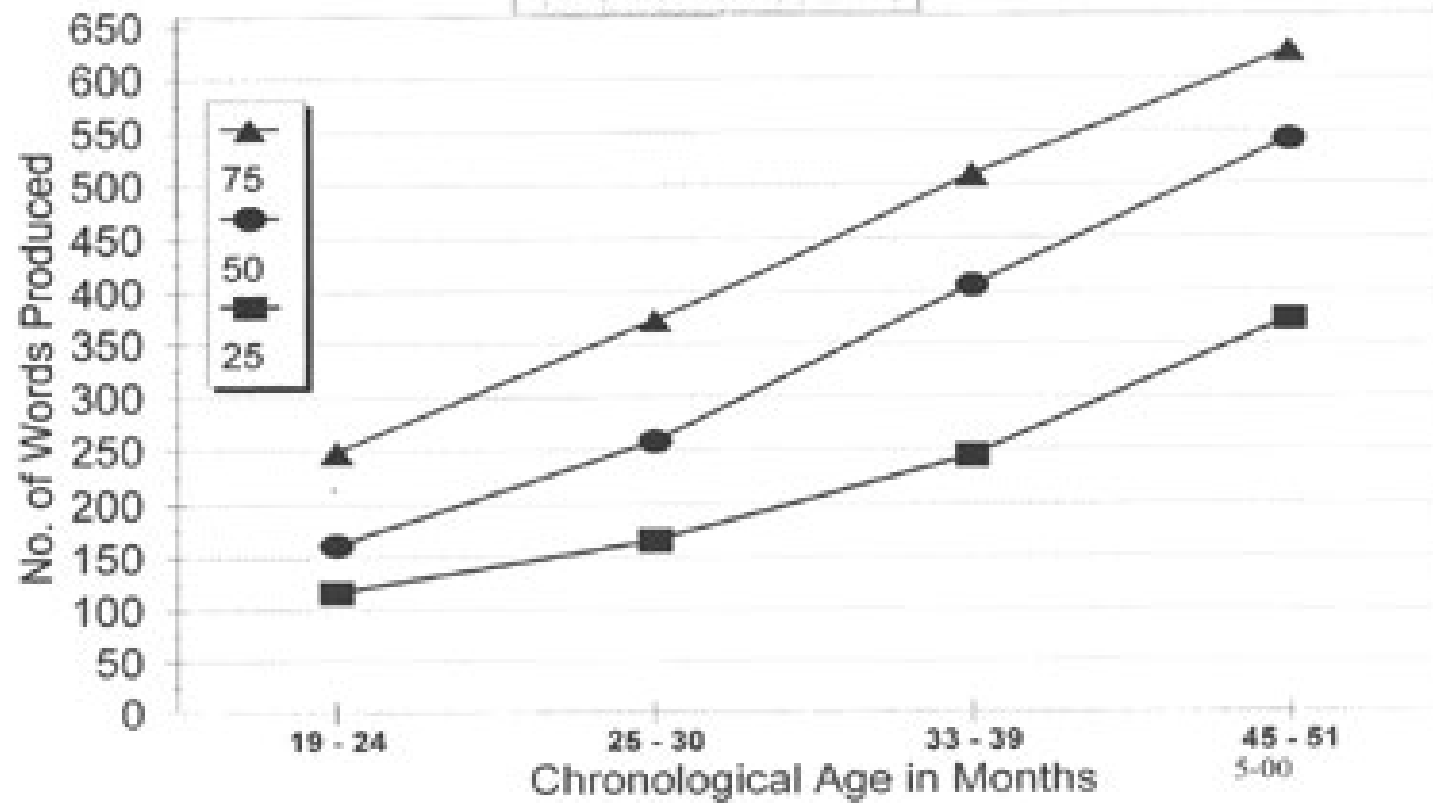


All children by cognitive level: 80  
or greater vs <80

# Words Produced

MacArthur Words & Sentences

Cognition  $\geq 80$



# Words Produced

MacArthur Words & Sentences

Cognition < 80

